

**NOTICE OF A REGULAR MEETING OF
THE FRIEDMAN MEMORIAL AIRPORT AUTHORITY**

PLEASE TAKE NOTICE that a regular meeting of the Friedman Memorial Airport Authority shall be held Tuesday, May 7, 2019 at 5:30 p.m. at the old Blaine County Courthouse Meeting Room Hailey, Idaho. All matters shall be considered Joint Decision Matters unless otherwise noted. The proposed Agenda for the meeting is as follows:

**AGENDA
May 7, 2019**

- I. APPROVE AGENDA – ACTION ITEM**
- II. PUBLIC COMMENT (10 Minutes Allotted)**
- III. FRIEDMAN MEMORIAL AIRPORT AUTHORITY MEETING MINUTES OF:**
 - A. April 9, 2019 Regular Meeting – Motion to Approve – **Attachment #1 ACTION ITEM**
 - B. April 23, 2019 Special Meeting – Motion to Approve – **Attachment #2 ACTION ITEM**
- IV. REPORTS**
 - A. Chairman Report
 - B. Blaine County Report
 - C. City of Hailey Report
 - D. Fly Sun Valley Alliance Report
 - E. Treasurer's Report
 - F. Airport Manager Report
- V. AIRPORT STAFF BRIEF (5 Minutes Allotted)**
 - A. Noise Complaints
 - B. Profit & Loss, ATCT Traffic Operations Count and Enplanement Data – **Attachment #3 - #5**
 - C. Airport Commercial Flight Interruptions (unofficial)
 - D. Review Correspondence
- VI. ACTION ITEMS (a vote may occur but is not required to be taken)**
 - A. NEW BUSINESS
 - 1. None
 - B. CONTINUING BUSINESS
 - 1. None
- VII. DISCUSSION AND UPDATES**
 - A. NEW BUSINESS
 - 1. ARFF Equipment Acquisition
 - B. CONTINUING BUSINESS
 - 1. Construction and Capital Projects
 - i. Terminal Improvements
 - ii. Air Carrier Apron and Parking Lot
 - 2. Airport Planning Projects
 - i. Environmental Assessment for Runway Protection Zone and Obstruction Removal
 - ii. Instrument Approach Development
 - 3. Miscellaneous
 - i. None
- VIII. PUBLIC COMMENT**
- IX. EXECUTIVE SESSION**
 - I.C. §74-206 (b) Evaluation of Employee Matters
 - I.C. §74-206 (c) To acquire an interest in real property which is not owned by a public agency
 - I.C. §74-206 (f) To communicate with legal counsel to discuss legal ramifications for controversy imminently likely to be litigated
- X. ADJOURNMENT**

III. FRIEDMAN MEMORIAL AIRPORT AUTHORITY MEETING MINUTES OF:

- A. April 9, 2019 Regular Meeting – Motion to Approve - **Attachment #1**
- B. April 23, 2019 Special Meeting – Motion to Approve - **Attachment #2**

IV. REPORTS

A. Chairman Report

This item is on the agenda to permit a Chairman report if appropriate.

B. Blaine County Report

This item is on the agenda to permit a County report if appropriate.

C. City of Hailey Report

This item is on the agenda to permit a City report if appropriate.

D. Fly Sun Valley Alliance Report

This item is on the agenda to permit a report if appropriate.

E. Treasurer's Report

This item is on the agenda to permit a Treasurer's report if appropriate.

F. Airport Manager Report

This item is on the agenda to permit an Airport Manager report if appropriate.

V. AIRPORT STAFF BRIEF - (5 Minutes Allotted)

A. Noise Complaints in April

LOCATION	DATE	TIME	AIRCRAFT TYPE	INCIDENT	ACTION/RESPONSE
Hailey	4/29/2019	12:31 p.m.	Jet	Loud Jet took off and left a plum of jet fumes trailing down the valley. The caller then stated that the quality of life in the valley is drastically diminished due to the airport.	Did not require a return call. Determined that the Jet most likely was the afternoon Delta departure.
Hailey	4/29/2019	4:29 p.m.	Jet	A Hailey resident called and stated he was concerned about a rumor he heard that the air carriers were going to schedule early morning flights at 6:00 a.m.	The Ops Manager informed the caller that the first departure would not be any earlier than 6:45 a.m.

B. Profit & Loss, ATCT Traffic Operations Count and Enplanement Data - **Attachments #3- #5**

Attachment #3 is Friedman Memorial Airport Profit & Loss Budget vs. Actual (unaudited)

Attachment #4 is 2001 - 2019 ATCT Traffic Operations data comparison by month

Attachment #5 is 2019 Enplanement, Deplanement and Seat Occupancy data

The following revenue and expense analysis is provided for Board information and review:

February, 2019		
Total Non-Federal Revenue	February, 2019	\$212,177.72
Total Non-Federal Revenue	February, 2018	\$218,452.18
Total Non-Federal Revenue	FY '19 thru February	\$1,492,135.31
Total Non-Federal Revenue	FY '18 thru February	\$1,302,280.12
Total Non-Federal Expenses	February, 2019	\$338,866.44
Total Non-Federal Expenses	February, 2018	\$243,359.05
Total Non-Federal Expenses	FY '19 thru February	\$1,651,665.78
Total Non-Federal Expenses	FY '18 thru February	\$1,261,618.44
Net Income to include Federal Programs	FY '19 thru February	-\$505,491.77
Net Income to include Federal Programs	FY '18 thru February	\$185,178.45

C. Airport Commercial Flight Interruptions (unofficial):

AIRLINE	FLIGHT CANCELLATIONS	FLIGHT DIVERSIONS
	April 1, 2019 through April 30, 2019	
Alaska Airlines	0	0
Delta	None	2
United	0	0

D. Review Correspondence

None

VI. ACTION ITEMS (a vote may occur but is not required to be taken)

A. NEW BUSINESS

1. None

B. CONTINUING BUSINESS

1. None

VII. DISCUSSION AND UPDATES

A. NEW BUSINESS

1. ARFF Equipment Acquisition

The project is currently out for bid. Four major manufacturers were contacted multiple times to be sure they were aware that the ARFF truck is out for bid. As of Three of the four major manufacturers have pulled down the Bidding Documents and Specifications. Bids are scheduled to be opened Thursday, May 23rd. Staff will be requesting the Board to consider award at the June meeting.

B. CONTINUING BUSINESS

1. Construction and Capital Projects

i. Terminal Improvements

Staff still has not received word from the FAA regarding our Supplemental Discretionary request for this project. As a reminder, our application for Supplemental Discretionary funds are for terminal improvements, including an expanded security checkpoint and secure hold room. Staff will keep the Board advised on any new developments.

ii. Air Carrier Apron Expansion and Parking Lot

Schedules have been developed for the remaining project work and warranty repairs on the new air carrier apron and parking lot. Remaining work on the apron includes concrete repairs and final marking application. Remaining work in the parking lot includes erosion repair and landscaping. All work is expected to be completed by June 7, weather permitting.

2. Airport Planning Projects

i. Environmental Assessment for Runway Protection Zone and Obstruction Removal

The EA Public Hearing took place on April 23rd. Five public comments were received at the hearing. As of May 2, one emailed comment was received following the newspaper article that was published on Friday April 26th. The comment period ends on May 3rd.

All received comments will be placed in a comment/response matrix and will be sent to FAA. FAA will formulate the final comment responses for inclusion into the EA and will ultimately make a decision on the Proposed Action/EA. We are hopeful that FAA will make their decision by the end of May.

The Board will be updated on new information or status at the meeting.

ii. **Instrument Approach Development**

Simulator validation is expected to take place before May 23. Upon completion of the validation, Flight Tech Engineering will share results with staff and the Board. This phase will take approximately 2-3 months.

3. **Miscellaneous**

i. **None**

VIII. PUBLIC COMMENT

- | | | | |
|------------|----------------------------|-------------------------|---|
| IX. | EXECUTIVE SESSION - | I.C. §74-206 (b) | Evaluation of Employee Matters |
| | | I.C. §74-206 (c) | To acquire an interest in real property which is not owned by a public agency |
| | | I.C. §74-206 (f) | To communicate with legal counsel to discuss legal ramifications for controversy imminently likely to be litigated |

X. ADJOURNMENT

**MINUTES OF A REGULAR MEETING
OF THE
FRIEDMAN MEMORIAL AIRPORT AUTHORITY***

**April 9, 2019
5:30 P.M.**

IN ATTENDANCE:

BOARD MEMBERS: Chairman – Jacob Greenberg, Vice-Chairman – Don Keirn, Ron Fairfax – Treasurer, Dick Fosbury – Secretary, Board - Fritz Haemmerle, Angenie McCleary, Pat Cooley

FRIEDMAN MEMORIAL AIRPORT STAFF: Airport Manager – Chris Pomeroy, Contracts/Finance Administrator – Lisa Emerick, ASC/Special Projects Coordinator/Executive Assistant – Steve Guthrie, Airport Operations Manager – Todd Emerick; Airport Administrative Coordinator – Sue Heaphy

CONSULTANTS: T-O Engineers – Dave Mitchell and Nathan Cuvala; Centerlyne – Sarah Shepard

AIRPORT TENANTS/PUBLIC: Atlantic Aviation – Brian Blackburn

AIRPORT LEGAL COUNSEL: Lawson Laski Clark & Pogue, PLLC – Jim Laski

PRESS: Idaho Mountain Express – Alejandra Buitrago

CALL TO ORDER:

The meeting was called to order at 5:30p.m. by Chairman Greenberg

I. APPROVE AGENDA

The agenda was approved as presented.

II. PUBLIC COMMENT

No public comment was made.

**III. APPROVE FMAA
MEETING MINUTES**

March 5, 2019 Regular Meeting Minutes

MOTION: *Made by Board Member Haemmerle to approve the March 5, 2019 Regular Meeting Minutes as amended. Seconded by Board Member Fosbury.*

PASSED UNANIMOUSLY

IV. REPORTS**A. Chairman Report**

Chairman Greenberg thanked the board for their support in electing him as Chairman.

B. Blaine County Report

No report was given.

C. City of Hailey Report

No report was given.

D. Fly Sun Valley Alliance Report

No report was given. The Board reviewed a report that provided Comparative Ski Resort Air Service Growth 2013-2018. The report was prepared and provided by Fly Sun Valley Alliance.

E. Airport Manager Report (see Power Point Presentation)

- The Airport Manager recapped winter air service that ended March 30th. He reported it was a very good year that resulted in a significant demand on the terminal specifically in TSA security screening and hold room. The month of February was challenging due to weather and flight diversions. An additional capacity issue arose in March, when the parking lot reached maximum capacity. Chairman Greenberg asked if this was due to local residents using the airport. The Airport Manager indicated it is his opinion that this was due to local resident usage during the local school spring break holiday. FMA staff worked with Centerlyne and the parking contractor to advise the public via the airport website, social media and advisory signage. Additional planning efforts will continue as parking capacity issues arise.
- The Airport Manager stated the 2019 summer air service schedule has been confirmed. Mornings will be especially busy due to the departure of four closely scheduled flights. He is working with TSA to address screening capacity and he is considering a joint effort with the TSA to utilize Airport Hosts to assist with passenger flow.
- TSA will be providing a PreCheck Enrollment Center at the airport during the week of June 24th. The processing fee will be \$85. FMA/TSA will conduct a joint marketing effort to promote this opportunity.
- Airport Manager provided an update on the remote tower program and his plans to travel with Chairman Greenberg to Washington DC April 14-18 to meet with FAA Airports and NextGen offices. Other meetings are scheduled with congressional delegation and remote tower vendors.
- The Idaho Airport Management Association Conference will be held in Coeur d'Alene Idaho on April 15-16, 2019. Operations Manager Todd Emerick will be attending. This conference will be held in Sun Valley next year.
- Airport Manager Pomeroy would like to start the discussion on conducting an Airport Strategic Plan. T-O Engineer Consultant Dave Mitchell commented that with the changes in the airport he believes it is important to be proactive to these changes and how they affect the airport in terms of operations and staffing. Board Member Fosbury asked when the last strategic plan was completed. The Airport Manager responded, to his knowledge this would be the Board's first strategic plan. The board discussed and agreed with the Airport Manager on the importance of such a plan and agreed to begin the preliminary steps.

V. AIRPORT STAFF BRIEF

- A. Noise Complaints (See Brief)
- B. Profit & Loss, ATCT Traffic Operations Count and Enplanement Data (See Brief)
Chairman Greenberg suggested and the Board concurred that a financial report should be presented on a quarterly basis.
- C. Airport Commercial Flight Interruptions (See Brief)
- D. Review Correspondence (See Brief)

VI. ACTION ITEMS

- A. NEW BUSINESS (See Brief & Power Point)
 - 1. Consideration and Acceptance of Bid for Tree Removal Services – Attachments 5 & 6 – ACTION ITEM
Work is pending FAA approval. The Airport Manager stated he received two bids out of four contractors contacted. The bids include a phased project. Phase 1 will include topping the trees. Phase 2 will be completed in the fall and will include the removal of tree root balls and repair of the canal. He advised the Board no work can start until the FAA has issued a determination on the EA. This is prudent to insure the airport is prepared pending a hopeful AE approval by the FAA.

MOTION: *Made by Board Member Haemmerle to award Alpine Tree Service the contract for tree removal services. Seconded by Board Member Fosbury.*

PASSED UNANIMOUSLY

B. CONTINUING BUSINESS

1. FMAA Board Officer Appointment – Appointment of Secretary – ACTION ITEM
Board Member Fosbury formally resigned as secretary. Based on the resignation and discussion, Board Member McCleary agreed to serve as Secretary.

MOTION: *Made by Board Member Haemmerle to accept Board Member Fosbury's resignation as Board Secretary and to appoint Board Member McCleary as Secretary. Seconded by Board Member Fosbury.*

PASSED UNANIMOUSLY

VII. DISCUSSION AND UPDATES

A. NEW BUSINESS

1. Revised Employee Handbook

The Airport Manager reported that the airport management team and airport legal counsel have been updating the airport's employee handbook. The Airport Manager indicated the document is ready to be reviewed on a Board level. After Board discussion, Board Members Haemmerle, McCleary and Vice Chairman Keirn were selected to serve on a review committee to conduct the initial review.

2. Five Year Engineering Selection Process

The Airport Manager explained the five-year engineering contract with T-O Engineering has expired. In accordance with the FAA requirements, the Board will need to conduct a consultant selection process. The Board discussed the next steps and selected Board Members Fairfax, Cooley, and Fosbury to serve on a consultant selection committee.

B. CONTINUING BUSINESS

1. Construction and Capital Projects

- i. Terminal Improvements

This project continues to be dependent upon FAA proposal acceptance and funding. No word has been received from the FAA regarding our application.

- ii. Air Carrier Apron and Parking Lot Projects

The Airport Manager reported the air carrier and parking lot projects to include landscaping and pavement markings will resume in the next few weeks, weather pending. There are also a few warranty issues the engineer has been addressing with the contractor that include asphalt pavement joint and erosion issues that arose during the winter.

2. Airport Planning Projects

- i. Environmental Assessment for Runway Protection Zone and Obstruction Removal

The EA documents have been distributed for public review comment until May 3, 2019. Printed versions of the documents are available to the public in four locations in Hailey and are also posted on the airport's website.

A Public Hearing is scheduled on April 23, 2019 at the Blaine County Courthouse at 5:30 pm.

- ii. Instrument Approach Development

The Airport Manager explained the next step in the instrument approach feasibility process is a simulator validation. The airport's consultant, is working with Skywest on this process and it is estimated to take 2-3 months. The Airport

Manager expects a full report will be available for Board review in early summer.

3. Miscellaneous

i. None.

VIII. PUBLIC COMMENT

No public comment

**IX. EXECUTIVE SESSION –
I.C. §74-206 (c)(f)**

None

X. ADJOURNMENT

The April 9, 2019 Regular Meeting of the Friedman Memorial Airport Authority was adjourned at approximately 6:24p.m.

Jacob Greenberg, Chairman

* *Additional resources/materials that should be reviewed with these meeting minutes include but are not limited to the Friedman Memorial Airport Authority Board Packet briefing, the PowerPoint presentation prepared for this meeting and any referenced attachments.*

**MINUTES OF A SPECIAL MEETING
OF THE
FRIEDMAN MEMORIAL AIRPORT AUTHORITY***

**April 23, 2019
5:30 P.M.**

IN ATTENDANCE:

BOARD MEMBERS: Chairman – Jacob Greenberg, Vice-Chairman – Don Keirn, Ron Fairfax – Treasurer, Dick Fosbury – Secretary, Board - Angenie McCleary, Pat Cooley
FRIEDMAN MEMORIAL AIRPORT STAFF: Airport Manager – Chris Pomeroy, Contracts/Finance Administrator – Lisa Emerick, ASC/Special Projects Coordinator/Executive Assistant – Steve Guthrie, Airport Operations Manager – Todd Emerick; Airport Administrative Coordinator – Sue Heaphy
FAA: Lead Civil Engineer/Compliance Specialist - Steve Engebrecht
CONSULTANTS: T-O Engineers – Dave Mitchell & Vince Barthels
AIRPORT TENANTS/PUBLIC: Atlantic Aviation – Brian Blackburn, Fly Sun Valley Alliance – Carol Waller, Len Harlig, Ryan Sullivan, Marc Reinemann, Carl Hjelm, Glass Cockpit Aviation – John Strauss, David Anttila, SVED - Jack Bariteau
AIRPORT LEGAL COUNSEL: Lawson Laski Clark & Pogue, PLLC – Jim Laski
PUBLIC HEARING FACILITATOR: Judge Robert Elgee, retired
PUBLIC HEARING STENOGRAPHER: M&M Court Reporting Service - Jeff LaMar
PRESS: Idaho Mountain Express – Alejandra Buitrago

CALL TO ORDER:

The meeting was called to order at 5:30p.m. by Chairman Greenberg. Chairman Greenberg stated the purpose of the meeting is to conduct a Public Hearing for the Draft Environmental Assessment and Section 4(f) Evaluation for proposed improvements to the airport. He stated this is the only agenda item and that Judge Elgee, retired, will be facilitating the hearing. He further explained the purpose of the hearing is to take public comment only and the Board and Airport staff will not respond to any comments or questions. Chairman Greenberg introduced the Public Hearing meeting facilitator, Judge Robert Elgee, retired and Vince Barthels, Project Manager, T-O Engineers.

I. PUBLIC HEARING

RE: DRAFT ENVIRONMENTAL ASSESSMENT INCLUDING SECTION 4(f) EVALUATION

See Attachment #1 – Presentation given by Vince Barthels, T-O Engineers & Attachment #2 – Public Hearing transcription to include public comments.

Judge Elgee concluded the Public Hearing at 6:02 p.m.

II. ADJOURNMENT

The April 23, 2019 Regular Meeting of the Friedman Memorial Airport Authority was adjourned at approximately 6:03 p.m.

Angenie McCleary, Secretary

FRIEDMAN MEMORIAL AIRPORT

LAND ACQUISITION AND OBSTRUCTION REMOVAL
ENVIRONMENTAL ASSESSMENT &
SECTION 4(F) EVALUATION OVERVIEW



HAILEY, IDAHO ✈️ iFLYSUN.COM



T-O ENGINEERS

STAKEHOLDERS

- Friedman Memorial Airport Authority (FMAA)
 - Airport Board
 - Airport Manager
- Federal Aviation Administration (FAA)
 - Lead Agency
- Members of the Public
 - Bellevue
 - Hailey

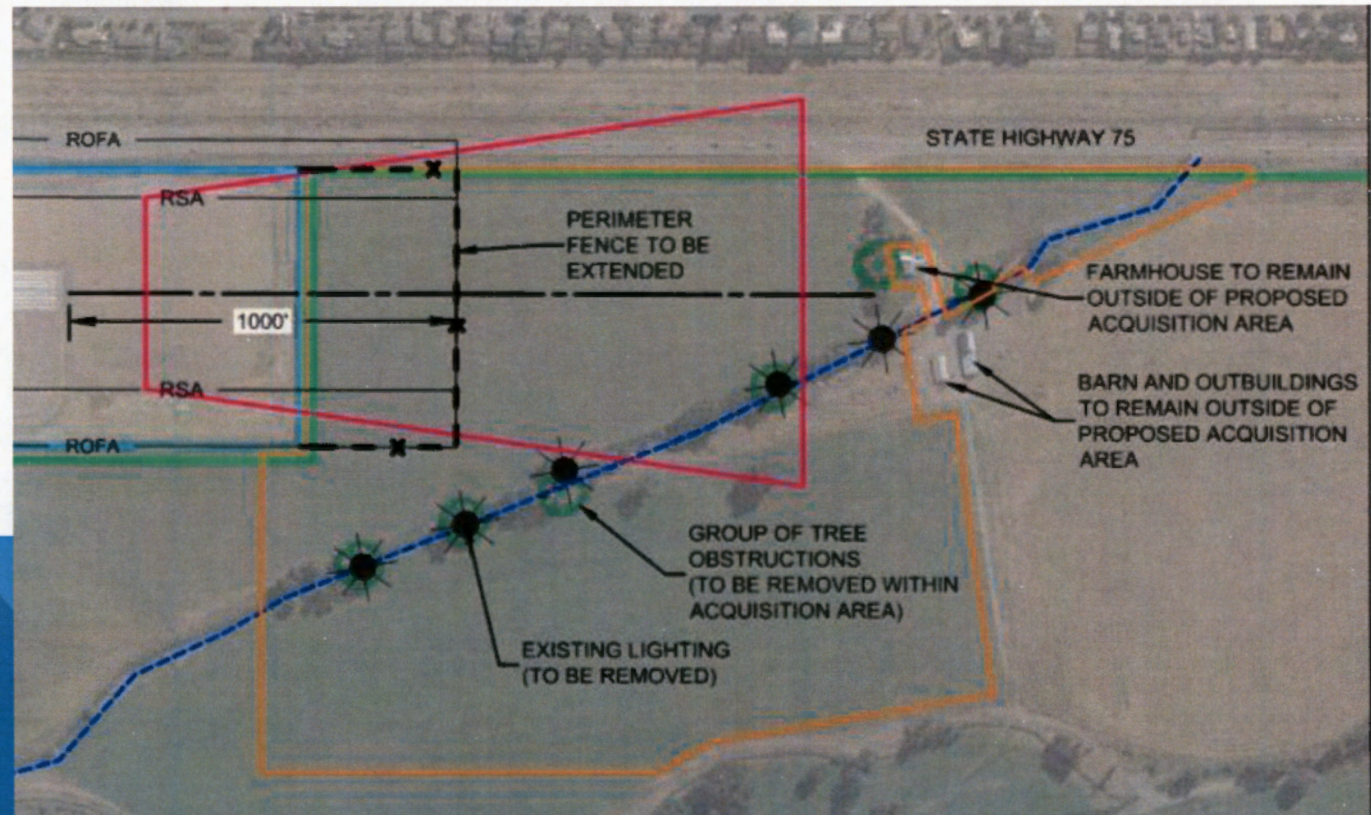


ENVIRONMENTAL PROCESS & POLICIES

- National Environmental Policy Act (NEPA)
- FAA Order 1050.1F Environmental Impacts: Policies & Procedures
- FAA Order 5050.4B Airport Actions
- Section 4(F) of the U.S. Dept. of Transportation Act of 1966
- Clean Water Act, Clean Air Act and National Historic Preservation Act
- Public Hearing – April 23rd
- Overall 45-Day Comment Period Requirement–started March 20th

PROPOSED ACTION:

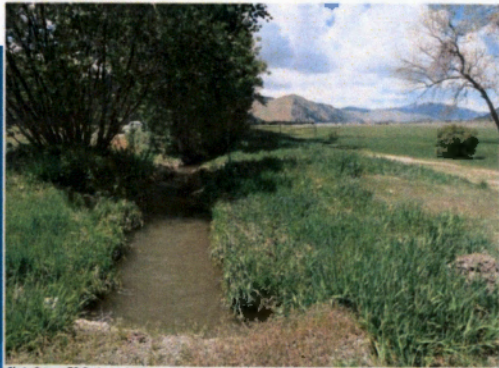
- Acquisition of 64.6 acres
- Tree removal
- Extended fencing



RESOURCES



PHOTO 2-1: COVE CANAL



OPPORTUNITY TO COMMENT

Today

- Verbal
- Written

Mail by May 3rd, 2019

T-O Engineers

Attn: Vince Barthels

121 W. Pacific Ave, Ste 200

Spokane, WA 99201

Email by May 3rd 5:00pm PST

vbarthels@to-engineers.com

Slide 1

Good evening and welcome to the Public Hearing for the Friedman Memorial Airport Land Acquisition and Obstruction Removal Environmental Assessment and Section 4(f) Evaluation. I am Vince Barthels, Environmental Project Manager with T-O Engineers. T-O Engineers is the Project Consultant working for the Airport. Tonight, I will be sharing with you a brief overview of the information presented in the Environmental Assessment and Section 4(f) Evaluation. I have a 6 slide PowerPoint that should take roughly 10 minutes to walk through. During this presentation, I will not be taking questions. I will expand on this process more at the end of this presentation.

Slide 2

I would like to acknowledge the Stakeholders present here tonight, including, but not limited to:

- **Members of the Friedman Memorial Airport Authority Board**
- **The Airport Manager and Administrative staff**
- **The Federal Aviation Administration, represented by Steve Engebrecht, Professional Engineer and Project Manager.**
- **Dave Mitchell, P.E. with T-O Engineers**
- **And, members of the Public with us tonight.**

As background, the Friedman Memorial Airport Authority was formed through a joint powers agreement between the City of Hailey and Blaine County. They operate and manage the Airport as a commercial services airport. The Friedman Memorial Airport Authority serves as the Airport Sponsor for this Project. The Federal Aviation Administration or FAA is the lead Federal agency.

Slide 3

The National Environmental Policy Act (or NEPA) is the guiding regulation under which many other laws and policies are applied. Relevant processes, policies and Acts that pertain to the Environmental Assessment and/or 4 (f) Evaluation include, but are not limited to:

- FAA Order 1050.1F - Environmental Impacts: Policies and Procedures;**
- FAA Order 5050.4B – which pertains to NEPA implementing instruction for Airport Actions;**
- Section 4 (F) of the U.S. Department of Transportation Act of 1966;**
- Clean Water Act;**
- Clean Air Act; and,**
- National Historic Preservation Act.**

This Environmental Assessment and 4(f) Evaluation were prepared to:

- identify potential impacts to the environment that are associated with the proposed action; and,**
- discuss how any identified impacts could be avoided, minimized or mitigated.**

These documents combined have at least a 45-day comment period that is required. The comment period started on March 20th and concludes on May 3rd. Tonight's Public Hearing aligns to be at day "35" within the afforded comment period.

Slide 4

The Proposed Action involves the acquisition of approximately 64.6 acres at the southern end of Runway 31; tree removal and extended fencing. The acquisition (shown in orange on this slide) gains full control of the land encompassing the Runway Safety Area, full length of the Runway Object Free Area and most of Runway Projection Zone. The acquisition allows for the maintenance of areas where obstructions are located within approach and departure surfaces. The Proposed Action DOES NOT acquire the portion of the Runway Object Free Area associated with Hwy 75.

The Proposed Action includes the removal of all trees on the south end of the runway that penetrate, or could penetrate in the future, the Airport's Part 77 Approach Surface and Airport Circular 5300-13A Departure Surface. Up to 200 trees may be removed. After the tree removal the FAA would amend the departure procedure for Runway 13.

The Proposed Action would extend the Airport perimeter fence to provide fencing for the full length of the Runway Object Free Area, which places the fence approximately 1,000 feet beyond Runway 31 end. This slide illustrates the extended fencing. The fence would be extended approximately 400 feet south of its current location to include 6.5 additional acres and the full Runway Safety Area and full length of Runway Object Free Area. A portion of the width of the Runway Object Free Area for Hwy 75 will remain outside of the Airport fence.

Slide 5

Chapter 4 of the Environmental Assessment is titled “Affected Environment, Environmental Consequences, and Mitigation.” As described in this Chapter, potentially affected resources may include: *(pause for a drink of water)*

In terms of Biological Resources, the Proposed Action may impact but not likely to contribute to federal listing of Red-tailed hawk (shown in the center photo of this slide), and the Proposed Action has been determined to have no effect on the long-billed curlew and the olive-sided flycatcher. In the summer of 2017, presence/absence surveys were conducted for the Yellow-billed cuckoo. Suitable habitat to support the YBC is not present within the project area. The Proposed Action will have no effect on the YBC. In terms of General Vegetation and Wildlife, Cottonwood tree removal may affect other bird species due to removal of nesting/perching opportunities, but is likely not significant due to availability of forested cover located to the west along the Big Wood River.

The Section 4(f) Evaluation is located within Appendix G of the Environmental Assessment. Section 4(f) resources include: Cove Canal, Eccles Flying Hat Ranch, and a Barn on the Eccles Flying Hat Ranch. The Cove Canal received a no adverse effect, the Eccles Flying Hat Ranch (west of Hwy 75) received an adverse effect due to windrow (or tree) removal near the farmstead; and, the Barn on the Eccles Flying Hat Ranch received a no effect determination. A Memorandum of Agreement (or MOA) was signed in order to mitigate the adverse effect of removing the trees near the farmhouse. Within the MOA, the Mitigation Plan or measures include: providing a display and/or interpretive panels at the Airport in a public area and replanting low growing and airport compatible shrubs species in close proximity to the farmhouse.

Concerning Farmlands, 6.5 acres of the total acquisition will be converted from "Prime Farmland" to "Not Prime Farmland," but deemed not a significant effect as 6.5 acres equates to less than 1% of the total Ranch acreage.

In terms of Historical Resources, the Cove Canal (dating back to 1882) was identified. Again, there is an adverse effect of Eccles Flying Hat Ranch, due to removal of windrow of trees. During the Environmental Assessment process, an Invitation for Consultation Letter was sent to Shoshone Bannock Tribes.

In terms of Compatible Land Use, the Proposed Action aligns with current land use planning and zoning requirements; furthermore, the Proposed Action will have no significant effect on land use within the vicinity of the Airport.

With respect to Visual Impacts, the removal of the trees near the farmhouse will diminish the visual character of the setting of the farmstead and will yield an adverse effect on visual resources and visual character in the project area.

In terms of Water Resources, there will be a conversion of forested wetlands and scrub-shrub wetlands to emergent wetlands by removing trees along approximately 2,691 linear feet of Cove Canal. Consultation with the U.S. Army Corps of Engineers determined that this conversion from one wetland type to another, is not considered an impact under the Clean Water Act.

Within Section 4.15 of Chapter 4 of the Environmental Assessment, Cumulative Impacts were viewed looking collectively at past, current and future projects.

Slide 6

The public has the opportunity to provide comments in the following ways:

- You can provide either written or verbal comments today at this Public Hearing following this presentation. There is a transcriptionist present at this public hearing.**
- You can mail comments to the address listed on this slide. The address is 121 W. Pacific Ave, Suite 200, Spokane, WA 99201. Please note mailed comments must be post-marked no later than May 3, 2019.**
- You can email comments to the email address shown on this slide no later than 5:00 PM PST on May 3rd, 2019. Emailed comments will receive a confirmation response from me. For the record, the email address is vbarthels@to-engineers.com**

Lastly, I would like to communicate that this Public Hearing provides the opportunity for individuals to review and comment on the presented Environmental Assessment and Section 4(f) Evaluations linked to the Friedman Memorial Airport Proposed Action. This Public Hearing is not structured as a Town Hall Meeting, where questions are presented by the public, and answers are provided by the Airport, FAA or the Consultant. To conclude, comments on these documents are welcomed and encourages; however, it should be noted that responses to comments provided (or answers to questions submitted) will not be provided at this Public Hearing. Received Public Comments will become part of the Administrative Record; and, responses to comments or questions will be formulated within the Administrative Record as part of the Environmental Assessment. Thank you for your time and attention!

BEFORE FRIEDMAN MEMORIAL AIRPORT AUTHORITY BOARD

IN RE:)
FRIEDMAN MEMORIAL AIRPORT)
_____)

PUBLIC HEARING
BLAINE COUNTY COURTHOUSE
206 1ST AVENUE SOUTH
HAILEY, IDAHO 83333
APRIL 23, 2019
5:37 P.M.

REPORTED BY:

JEFF LaMAR, C.S.R. No. 640

Notary Public

<p style="text-align: right;">Page 2</p> <p>1 FACILITATOR: Judge Robert James Elgee</p> <p>2</p> <p>3 FRIEDMAN MEMORIAL AIRPORT AUTHORITY BOARD:</p> <p>4 Jacob Greenberg, Chair</p> <p>5 Donald Keirn, Vice Chair</p> <p>6 Ronald Fairfax, Treasurer</p> <p>7 Angeneie McCleary, Secretary</p> <p>8 Richard Fosbury, Board Member</p> <p>9 Pat Cooley, Board Member</p> <p>10 ATTORNEY FOR FRIEDMAN MEMORIAL AIRPORT:</p> <p>11 James R. Laski, Lawson Laski Clark & Pogue, LLP</p> <p>12 PROJECT CONSULTANT:</p> <p>13 Vince Barthels, T.O. Engineers</p> <p>14 PUBLIC COMMENTERS:</p> <p>15 David Anttila</p> <p>16 Carol Waller</p> <p>17 John Strauss</p> <p>18 Jack Bariteau</p> <p>19</p> <p>20</p> <p>21</p> <p>22</p> <p>23</p> <p>24</p> <p>25</p>	<p style="text-align: right;">Page 4</p> <p>1 facilitate and oversee this meeting for the purpose of</p> <p>2 taking public comments on the issues that have been</p> <p>3 publicly noticed. I have been a judge here in Blaine</p> <p>4 County for 25 years past and I am now retired. I have</p> <p>5 no personal interest in any of the issues presented</p> <p>6 here for public comment.</p> <p>7 This Public Hearing concerning the draft</p> <p>8 Environmental Assessment and Section 4(f) Evaluation</p> <p>9 for proposed improvements to the Friedman Memorial</p> <p>10 Airport, Hailey, Idaho, is now open. This Public</p> <p>11 Hearing will proceed in an orderly fashion, and I would</p> <p>12 like to ask your cooperation in the following</p> <p>13 procedure.</p> <p>14 Everyone present will be given an</p> <p>15 opportunity to be heard after the consultant has</p> <p>16 offered a brief overview presentation of the proposed</p> <p>17 project action and the two draft documents presented.</p> <p>18 The stenographer will be recording what is</p> <p>19 said during the hearing. Therefore, if you wish to</p> <p>20 provide comments, please begin by stating your name and</p> <p>21 address. Please spell your first and last name for the</p> <p>22 stenographer. Please speak slowly and clearly. Only</p> <p>23 one person will be allowed to speak at a time.</p> <p>24 Persons in the audience must refrain from</p> <p>25 emotional outbursts and exchanges between audience</p>
<p style="text-align: right;">Page 3</p> <p>1 CHAIRMAN GREENBERG: All right. I'm calling</p> <p>2 this special meeting of the FMAA to order for Tuesday,</p> <p>3 April 23rd, 2019. The purpose of this meeting is to</p> <p>4 conduct a Public Hearing for the draft Environmental</p> <p>5 Assessment and Section 4(f) Evaluation for proposed</p> <p>6 improvements to the Airport. This is the only agenda</p> <p>7 item tonight.</p> <p>8 Judge Elgee will facilitate the hearing.</p> <p>9 The purpose is to take public comment only, and the</p> <p>10 Board and Airport staff will respond to any comments or</p> <p>11 questions this evening.</p> <p>12 SECRETARY McCLEARY: Will not.</p> <p>13 MR. LASKI: Will not.</p> <p>14 CHAIRMAN GREENBERG: Will not. There is not a</p> <p>15 "not" in here.</p> <p>16 SECRETARY McCLEARY: You just want to make that</p> <p>17 real clear.</p> <p>18 CHAIRMAN GREENBERG: Well, I am going to make it</p> <p>19 real clear. It was not in here, and we will not</p> <p>20 respond to any comments or questions this evening, so</p> <p>21 don't ask.</p> <p>22 All right, Judge. Take it.</p> <p>23 JUDGE ELGEE: Thank you.</p> <p>24 Good evening. My name is Robert Elgee. I</p> <p>25 have been hired as an independent moderator to</p>	<p style="text-align: right;">Page 5</p> <p>1 members, audience members and a commentator, and/or any</p> <p>2 open challenges to presentation of any public comment</p> <p>3 being provided. I will not allow outbursts of</p> <p>4 applause, cheering, or any other form of emotional</p> <p>5 displays during the course of this hearing.</p> <p>6 All comments should be addressed to the</p> <p>7 hearing body, should be relevant to the application,</p> <p>8 and should not be of a personal nature. When all</p> <p>9 persons have had the opportunity to provide comments,</p> <p>10 the hearing will be closed. Mobile telephones, pagers,</p> <p>11 and other electronic equipment must be silenced during</p> <p>12 the hearing.</p> <p>13 At this time the project consultant, Vince</p> <p>14 Barthels, will make a presentation explaining the</p> <p>15 proposal.</p> <p>16 MR. BARTHEL: Thank you, Judge.</p> <p>17 My name is Vince Barthels, V-i-n-c-e, last</p> <p>18 name is B-a-r-t-h-e-l-s. My address is 121 West</p> <p>19 Pacific Avenue, Suite 200, Spokane, Washington 99201.</p> <p>20 Good evening and welcome to the Public</p> <p>21 Hearing for the Friedman Memorial Airport land</p> <p>22 acquisition and obstruction removal Environmental</p> <p>23 Assessment and Section 4(f) Evaluation. Again, I'm</p> <p>24 Vince Barthels. I'm the environmental project manager</p> <p>25 with T.O. Engineers.</p>

Page 6

1 Tonight I'll be sharing with you a brief
2 overview of the information presented in the
3 Environmental Assessment and Section 4(f) Evaluation.
4 I have a six-slide PowerPoint that should take roughly
5 ten minutes to walk through. During this presentation
6 I will not be taking questions. I will expand on this
7 process more at the end of the presentation.

8 I would like to acknowledge the
9 stakeholders present here tonight, including, but not
10 limited to, members of the Friedman Memorial Airport
11 Authority Board, the Airport manager, administrative
12 staff, Dave Mitchell, who's the project engineer and
13 project manager with T.O. Engineers, and members of the
14 public who have joined us this evening.

15 As background, the Friedman Memorial
16 Airport Authority was formed through a joint powers
17 agreement between the City of Hailey and Blaine County.
18 They operate and manage the Airport as a commercial
19 services Airport.

20 The Friedman Memorial Airport Authority
21 serves as the Airport sponsor for this project. The
22 Federal Aviation Administration, or FAA, is the lead
23 federal agency.

24 The National Environmental Policy Act, or
25 NEPA, is the guiding regulation under which many other

Page 7

1 laws and policies are applied. Relevant processes,
2 policies, and acts that pertain to the Environmental
3 Assessment and/or 4(f) Evaluation include, but are not
4 limited to, FAA Order 1050.1.F, environmental impacts,
5 policies, and procedures; FAA order 5050.4 B, which per
6 pains to the NEPA implementing instructions for Airport
7 actions; Section 4(f) of the U.S. Department of
8 Transportation Act of 1966; the Clean Water Act; the
9 Clean Air Act; the National Historic Preservation Act.

10 This Environmental Assessment and 4(f)
11 Evaluation were prepared to identify potential impacts
12 to the environment that are associated with the
13 Proposed Action and discuss how impacts could be
14 avoided, minimized, and mitigated.

15 These documents combined have at least a
16 45-day comment period that is required. The comment
17 period started on March 20th and concludes on May 3rd.
18 Tonight's Public Hearing aligns with day 35 in the
19 afforded comment period.

20 The Proposed Action of -- excuse me. The
21 Proposed Action involves the acquisition of
22 approximately 64.6 acres at the southern end of
23 Runway 31, tree removal, and extended fencing.

24 The acquisition shown in orange on this
25 slide gains full control of the land encompassing the

Page 8

1 Runway Safety Area, full length Runway Object Free
2 Area, and most of the Runway Protection Zone. The
3 acquisition allows for the maintenance of areas where
4 obstructions are located within the approach and
5 departure surfaces. The Proposed Action does not
6 acquire the portion of the Runway Object Free Area
7 associated with Highway 75. This area up here
8 [indicating].

9 The Proposed Action includes the removal of
10 all trees on the south end of the runway that penetrate
11 or could penetrate in the future the Airport's Part 77
12 Approach Surface and Airport Circular 5300-13A
13 Departure Surfaces -- Departure Surface, excuse me. Up
14 to 200 trees may be removed. After the tree removal,
15 the FAA would amend the departure procedure for
16 Runway 13.

17 The Proposed Action would extend the
18 Airport perimeter fence to provide fencing for the full
19 length Runway Object Free Area, which places the fence
20 approximately a thousand feet beyond the runway end,
21 shown here on this slide [indicating].

22 This slide illustrates the extended
23 fencing. The fence would be extended approximately
24 400 feet south of its current location and include 6.5
25 additional acres and the full Runway Safety Area and

Page 9

1 full length Runway Object Free Area. A portion of the
2 width of the Runway Object Free Area for Highway 75
3 will remain outside of the Airport fence.

4 Chapter 4 of the Environmental Assessment
5 is titled "Affected Environment, Environmental
6 Consequences, and Mitigation." As described in this
7 chapter, potentially affected resources may include:

8 In terms of Biological Resources, the
9 Proposed Action may impact -- excuse me, may impact but
10 not likely to contribute to the federal listing of
11 red-tailed hawk, shown in the center of this photo, and
12 the Proposed Action is determined to have no effect on
13 the long-billed curlew and the olive-sided flycatcher.

14 In the summer of 2017, presence/absence
15 surveys was conducted for the yellow-billed cuckoo.
16 Suitable habitat to support the yellow-billed cuckoo is
17 not present within the project area. The Proposed
18 Action will have no effect on the yellow-billed cuckoo.

19 In terms of general vegetation and wildlife
20 cottonwood tree removal may affect other bird species,
21 due to the removal of the nesting/perching
22 opportunities, but is likely not significant due to the
23 availability of forested cover located to the west
24 along the Big Wood River.

25 The Section 4(f) Evaluation is located

Page 10

1 within Appendix G of the Environmental Assessment. The
2 Section 4(f) resources include: The Cove Canal, Eccles
3 Flying Ranch -- Flying Hat Ranch, and a barn on the
4 Eccles Flying Hat Ranch. The Cove Canal received a no
5 adverse effect. The Eccles Flying Ranch west of
6 Highway 75 received an adverse effect due to the
7 windrow or tree removal near the farmstead. And the
8 barn on Eccles Flying Hat Ranch received a no effect
9 determination.

10 A Memorandum of Agreement, or MOA, was
11 signed in order to mitigate the adverse effect of
12 removing the trees near the farmstead -- or farmhouse.
13 Within the MOA, the Mitigation Plan or measures include
14 providing a display and/or interpretive panels at the
15 Airport in a public area and replanting low-growing and
16 Airport-combatable shrub species in close proximity to
17 the farmhouse.

18 Concerning farmlands, 6.5 acres of the
19 total acquisition will be converted from "Prime
20 Farmland" to "Not Prime Farmland," but deemed not a
21 significant effect as 6.5 acres equates to less than
22 1 percent of the total ranch acreage.

23 In terms of Historical Resources, the Cove
24 Canal, dating back to 1882, was identified. Again,
25 there is an adverse effect of the Eccles Flying Hat

Page 11

1 Ranch due to the removal of the windrow of trees.
2 During the Environmental Assessment process an
3 invitation for consultation letter was sent to the
4 Shoshone-Bannock Tribes.

5 In terms of Combatable Land Use, the
6 Proposed Action aligns with the current land use
7 planning and zoning requirements. Furthermore, the
8 Proposed Action will have no significant effect on land
9 use within the vicinity of the Airport.

10 With respect to visual impacts, the removal
11 of the trees near the farmhouse will diminish the
12 visual character of the setting of the farmstead and
13 will yield an adverse effect on the visual resources
14 and visual character in the project area.

15 In terms of Water Resources, there will be
16 a conversion of the forested and scrub-shrub wetlands
17 emergent wetlands by removing the trees along 2,691
18 linear feet of Cove Canal. Consultation with the U.S.
19 Army Corps of Engineers determined that this conversion
20 from one wetland type to another is not considered an
21 impact to the Clean Water Act.

22 Within Section 4.15 of Chapter 4 of the
23 Environmental Assessment, Cumulative Impacts were
24 viewed looking collectively past current and at future
25 projects.

Page 12

1 The public has an opportunity provide
2 comments in the following three ways: You can provide
3 either written or verbal comments today at the Public
4 Hearing following this presentation. There is a
5 transcriptionist present at this Public Hearing.

6 You can mail comments to the address listed
7 on this slide. The address, again, is 121 West Pacific
8 Avenue, Suite 200, Spokane, Washington 99201. Please
9 note, mailed comments must be postmarked no later than
10 May 3rd, 2019.

11 Thirdly, you can e-mail comments to the
12 e-mail address shown on this slide no later than
13 5:00 p.m. Pacific Standard Time on May 3rd, 2019.
14 E-mailed comments will receive a confirmation response
15 from me.

16 For the record, the e-mail -- my e-mail
17 address is vbarthels@to-engineers.com, and it's shown
18 on this slide.

19 Lastly, I'd like to communicate that this
20 Public Hearing provides the opportunity for individuals
21 to review and comment on the presented Environmental
22 Assessment and Section 4(f) Evaluation link to the
23 Friedman Memorial Airport Proposed Action.

24 This Public Hearing is not structured as a
25 town hall meeting where questions are presented by the

Page 13

1 public and answers are provided by the Airport, FAA, or
2 the consultant.

3 To conclude, comments on these documents
4 are welcomed and certainly encouraged. However, it
5 should be noted that responses to the comments provided
6 or answers to questions submitted as testimony will not
7 be provided at this hearing. Received public comments
8 will become part of the administrative record, and
9 responses to these comments or questions will be
10 formulated within the Administrative Record of the --
11 and as part of the Environmental Assessment.

12 Thank you for your time and attention.

13 With that, I would like to turn it back
14 over to Judge Elgee.

15 JUDGE ELGEE: Thank you.

16 I just have a few more comments, and then
17 we'll start with the public comments.

18 You do not have to repeat what someone else
19 says that you might agree with. You can just state
20 your name and address and state that you agree with the
21 comments made by person X or Y. If I break in during
22 your comments, I do not intend to, but if I do
23 interrupt, please stop. The stenographer can only
24 record one person talking at a time.

25 There will not be an opportunity for you to

Page 14

1 question FAA or Friedman Memorial Airport Authority
2 representatives or consultants at this meeting. This
3 is your opportunity for public comment. At the end of
4 the meeting, there will not be any debate or discussion
5 by any governing authorities. If the meeting goes
6 long, we may take short breaks. This meeting is not
7 scheduled to close at any particular time.

8 At this time the floor is open for comments
9 from the audience. Please come to the podium if you
10 wish to comment. Please, again, state your name, spell
11 your first and last names and your address, and make
12 whatever public comment you wish.

13 The floor is open.

14 MR. ANTILA: Hi. My name is David Anttila,
15 A-n-t-t-i-l-a. Excuse me. 161 Little Indio Lane,
16 Hailey, Idaho.

17 And I think that the -- my concern is the
18 number of trees, 200, seems exorbitant with the overall
19 project scale, especially in terms of the actual
20 line-of-flight path that's defined, which I assume --
21 and this is my assumption -- is the requirement for
22 where the trees need to be cut to provide safety for
23 landing and takeoff.

24 And I'm wondering whether this proposal is
25 actually going to clearcut the entire newly purchased

Page 15

1 site. And I'm adamantly against that. That's
2 essentially something I think is inappropriate. And I
3 think that, as was mentioned, it has aesthetic value.
4 Everyone driving up from the south enjoys the break
5 between Bellevue and Hailey, and it offers some
6 foreground to the mountains beyond. It's truly one of
7 our last scenic views in town. So I would like
8 everyone to tread cautiously.

9 Thank you.

10 JUDGE ELGEE: Thank you.

11 MS. WALLER: Carol Waller. 620 East Ridge
12 Drive, Hailey, Idaho.

13 JUDGE ELGEE: Can you spell your first and last
14 name.

15 MS. WALLER: Oh, Carol, C-a-r-o-l, W-a-l-l-e-r.

16 And did you get the address? Okay.

17 As director of Fly Sun Valley Alliance, I
18 wanted to make some remarks at this Public Hearing.

19 Certainly we understand that safety is the
20 key factor for this proposed land acquisition and
21 obstruction removal proposal. But I wanted to
22 reiterate that there are some other factors, which are
23 also important to the future success of commercial
24 airline operations at SUN, which Fly Sun Valley
25 Alliance is very involved with, along with the Airport.

Page 16

1 First is improved availability of
2 commercial flights to operate with fewer restrictions
3 on passenger loads, thereby increasing the
4 profitability and viability of flights and reducing the
5 overall cost for MRGs and other costs for the program
6 that we run.

7 Second, improved operational feasibility
8 for longer stage regional jet flights, i.e., from
9 Chicago; a longer market, especially in the summer when
10 we have issues with our heat and our temperature.

11 And third, the improved ability to better
12 plan for effective commercial airline flight schedules,
13 which are currently impacted by these and other
14 restrictions.

15 Thank you.

16 JUDGE ELGEE: Thank you.

17 Sure.

18 MR. STRAUSS: My name is John Strauss, J-o-h-n,
19 S-t-r-a-u-s-s. 73 Freedom Loop, Bellevue, 83313.

20 I'm the owner and operator of Glass Cockpit
21 Aviation, a flight school on the Airport. I've been
22 here approximately ten years, have the privilege of
23 flying with a lot of the pilots here on the Airport.

24 From the operator's perspective, the
25 elimination of the trees in the area depicted on your

Page 17

1 diagram is critical. Every student that I train from
2 primary flight training and up has to be qualified to
3 land at night at this Airport. That requires knowing
4 of the hazard, that requires our efforts to mitigate
5 that hazard, and to avoid hitting the trees.

6 Also, in the departure path it was
7 mentioned that the FAA can now amend their departure
8 path. If we fly visually in compliance with the Noise
9 Abatement Program, we make an early right turn toward
10 the west to avoid incoming traffic inbound from the
11 east. That requires us to fly a wider departure path
12 than is depicted on the instrument approach.

13 So that adds to your consideration of
14 protecting the entire area drawn on your diagram, and
15 unfortunately does require the removal of additional
16 trees. The pilot's community is in support of the
17 actions to obtain the land for purposes of quote,
18 "safety," close quote.

19 I have landed at many airports across this
20 countryside, and knowing each of the individual hazards
21 of each individual airport that I go to, especially at
22 night, can be quite a challenge. So by eliminating
23 that hazard, we have less objects to the standard
24 incoming and outgoing arrival and departure paths for
25 the Airport.

Page 18

1 If any questions are ever needed from the
2 aviation or pilot community, my offices are available
3 for any information that will assist in the process.
4 And I welcome any input we can be to support your
5 records.

6 In reviewing the four options provided in
7 your packet, the only comment I have and the suggestion
8 is if we're going to do it -- and I hope we do -- go
9 big or go home. If you acquire all of the property, we
10 get more protection. My fear would be we'll just be
11 returning in the future and doing additional work,
12 which would duplicate the costs involved in this.

13 As a member of this community over ten
14 years, I've gone through a lot of information in terms
15 of the proposed relocation, et cetera, of the Airport.
16 On behalf of the Flight School, I am totally thrilled
17 that the focus has been to make this Airport as safe as
18 possible and to do that which is necessary to protect
19 the Runway Safety Areas and the extensions provided in
20 your proposal.

21 Therefore, we are voicing strong support on
22 behalf of the aviation community and the operators of
23 this Airport.

24 Thank you.

25 JUDGE ELGEE: Thank you.

Page 19

1 MR. BARITEAU: Good evening. My name is Jack
2 Bariteau, B-a-r-i-t-e-a-u. I'm a member of the
3 Sun Valley Economic Development Corporation, better
4 known as SVED.

5 I was here to speak tonight just about the
6 success that we've enjoyed with the changes to the
7 Airport, our increased commercial activity, safety
8 features, \$35 million spent on the Airport to make it a
9 more viable Airport for our local citizenry and our
10 visitors.

11 And really, this has been a longstanding
12 goal of SVED in its efforts to help the Airport
13 Authority with the acquisition and the discussions with
14 the Eccles family. And we believe that this will be a
15 tremendous addition to our safety and additional
16 airlift for the long term for the community.

17 Thank you.

18 JUDGE ELGEE: Thank you.

19 Anyone else wishing to make public comment?
20 Going once, public comment, last call, next to last
21 call.

22 Yes. Do you want to comment again? Go
23 ahead.

24 MR. ANTTILA: Yeah. Thank you.

25 I just wanted to say that in the

Page 20

1 presentation of the entire project, it's been a safety
2 concern acquired by the FAA. And may be wrong on that,
3 actually.

4 But that I just get the sense there will be
5 economic opportunities encouraged by this in terms of
6 expansion of the Airport and more air traffic, and I
7 for one would say I don't agree with that policy.

8 JUDGE ELGEE: And if you could just state your
9 name again for the --

10 MR. ANTTILA: Yeah. David Anttila,
11 A-n-t-t-i-l-a-

12 JUDGE ELGEE: So for the people who are reading
13 this later will know who you were.

14 MR. ANTTILA: Yeah.

15 JUDGE ELGEE: Anyone else wishing to make public
16 comment? Going once, going twice, third call for
17 public comment. Anyone wish to comment?

18 It appears there are no further public
19 comment.

20 Do you wish to have the meeting closed by
21 Mr. Greenberg?

22 MR. LASKI: I think you can conclude the Public
23 Hearing, and then Mr. Greenberg can adjourn the special
24 meeting.

25 JUDGE ELGEE: I will do that at this time.

Page 21

1 There appears to be no -- no one else who
2 wishes to make public comment. The clock on the wall
3 says it's approximately 6:02 p.m. I will close the
4 public comment portion of this meeting.

5 Thank you all for attending.

6 CHAIRMAN GREENBERG: With that, I don't think we
7 need a motion. We'll just adjourn.

8 MR. LASKI: We can just adjourn.

9 CHAIRMAN GREENBERG: With that, we'll adjourn
10 the meeting.

11 JUDGE ELGEE: Very well. Thank you.

12 (Meeting concluded at 6:03 p.m.)

13 -oOo-

REPORTER'S CERTIFICATE

I, JEFF LaMAR, CSR No. 640, Certified Shorthand
Reporter, certify:

That the foregoing proceedings were taken before
me at the time and place therein set forth.

That the testimony and all objections made were
recorded stenographically by me and transcribed by me
or under my direction.

That the foregoing is a true and correct record
of all testimony given, to the best of my ability.

I further certify that I am not a relative or
employee of any attorney or party, nor am I financially
interested in the action.

IN WITNESS WHEREOF, I set my hand and seal this
1st day of May, 2019.



JEFF LaMAR, CSR NO. 640
Notary Public
Post Office Box 2636
Boise, Idaho 83701-2636

My commission expires December 30, 2023

	6:22	Angeneie (1)	Aviation (4)
\$	administrative (3)	2:7	6:22;16:21;18:2,22
	6:11;13:8,10	Anttila (7)	avoid (2)
\$35 (1)	adverse (5)	2:15;14:14,14;19:24;20:10,	17:5,10
19:8	10:5,6,11,25;11:13	10,14	avoided (1)
I	aesthetic (1)	A-n-t-t-i-l-a (1)	7:14
	15:3	14:15	B
[indicating] (2)	affect (1)	A-n-t-t-i-l-a- (1)	
8:8,21	9:20	20:11	back (2)
A	Affected (2)	appears (2)	10:24;13:13
	9:5,7	20:18;21:1	background (1)
	afforded (1)	Appendix (1)	6:15
	7:19	10:1	Bariteau (3)
Abatement (1)	Again (6)	applause (1)	2:18;19:1,2
17:9	5:23;10:24;12:7;14:10;	5:4	B-a-r-i-t-e-a-u (1)
ability (1)	19:22;20:9	application (1)	19:2
16:11	against (1)	5:7	barn (2)
acknowledge (1)	15:1	applied (1)	10:3,8
6:8	agency (1)	7:1	Barthels (5)
acquire (2)	6:23	approach (3)	2:13;5:14,16,17,24
8:6;18:9	agenda (1)	8:4,12;17:12	B-a-r-t-h-e-l-s (1)
acquired (1)	3:6	approximately (5)	5:18
20:2	agree (3)	7:22;8:20,23;16:22;21:3	become (1)
acquisition (7)	13:19;20;20:7	April (1)	13:8
5:22;7:21,24;8:3;10:19;	agreement (2)	3:3	begin (1)
15:20;19:13	6:17;10:10	Area (13)	4:20
acreage (1)	ahead (1)	8:1,2,6,7,19,25;9:1,2,17;	behalf (2)
10:22	19:23	10:15;11:14;16:25;17:14	18:16,22
acres (4)	Air (2)	areas (2)	Bellevue (2)
7:22;8:25;10:18,21	7:9;20:6	8:3;18:19	15:5;16:19
across (1)	airlift (1)	Army (1)	better (2)
17:19	19:16	11:19	16:11;19:3
Act (6)	airline (2)	arrival (1)	beyond (2)
6:24;7:8,8,9,9;11:21	15:24;16:12	17:24	8:20;15:6
action (13)	AIRPORT (36)	Assessment (12)	Big (2)
4:17;7:13,20,21;8:5,9,17,9;9,	2:3,10;3:6,10;4:10;5:21;6:10,	3:5;4:8;5:23;6:3;7:3,10;9:4;	9:24;18:9
12,18;11:6,8;12:23	11,16,18,19,20,21;7:6;8:12,18;	10:1;11:2,23;12:22;13:11	Biological (1)
actions (2)	9:3;10:15;11:9;12:23;13:1;	assist (1)	9:8
7:7;17:17	14:1;15:25;16:21,23;17:3,21,	18:3	bird (1)
activity (1)	25;18:15,17,23;19:7,8,9,12;	associated (2)	9:20
19:7	20:6	7:12;8:7	Blaine (2)
acts (1)	Airport-combatable (1)	assume (1)	4:3;6:17
7:2	10:16	14:20	BOARD (5)
actual (1)	airports (1)	assumption (1)	2:3,8,9;3:10;6:11
14:19	17:19	14:21	body (1)
actually (2)	Airport's (1)	attending (1)	5:7
14:25;20:3	8:11	21:5	break (2)
adamantly (1)	aligns (2)	attention (1)	13:21;15:4
15:1	7:18;11:6	13:12	breaks (1)
addition (1)	Alliance (2)	ATTORNEY (1)	14:6
19:15	15:17,25	2:10	brief (2)
additional (4)	allow (1)	audience (4)	4:16;6:1
8:25;17:15;18:11;19:15	5:3	4:24,25;5:1;14:9	C
address (9)	allowed (1)	authorities (1)	
4:21;5:18;12:6,7,12,17;	4:23	14:5	call (3)
13:20;14:11;15:16	allows (1)	AUTHORITY (6)	19:20,21;20:16
addressed (1)	8:3	2:3;6:11,16,20;14:1;19:13	calling (1)
5:6	along (3)	availability (2)	3:1
adds (1)	9:24;11:17;15:25	9:23;16:1	can (12)
17:13	amend (2)	available (1)	12:2,6,11;13:19,23;15:13;
adjourn (4)	8:15;17:7	18:2	17:7,22;18:4;20:22,23;21:8
20:23;21:7,8,9	and/or (3)	Avenue (2)	
Administration (1)	5:1;7:3;10:14	5:19;12:8	

Canal (4) 10:2,4,24;11:18	3:9;4:6;5:2;7:16,16,19; 12:21;14:3,10,12;18:7;19:19, 20,22;20:16,17,17,19;21:2,4	cost (1) 16:5	diminish (1) 11:11
Carol (3) 2:16;15:11,15	commentator (1) 5:1	costs (2) 16:5;18:12	director (1) 15:17
C-a-r-o-l (1) 15:15	COMMENTERS (1) 2:14	cottonwood (1) 9:20	discuss (1) 7:13
cautiously (1) 15:8	comments (21) 3:10,20;4:2,20;5:6,9;12:2,3, 6,9,11,14;13:3,5,7,9,16,17,21, 22;14:8	countryside (1) 17:20	discussion (1) 14:4
center (1) 9:11	commercial (5) 6:18;15:23;16:2,12;19:7	County (2) 4:4;6:17	discussions (1) 19:13
certainly (2) 13:4;15:19	communicate (1) 12:19	course (1) 5:5	display (1) 10:14
cetera (1) 18:15	community (5) 17:16;18:2,13,22;19:16	Cove (4) 10:2,4,23;11:18	displays (1) 5:5
Chair (2) 2:4,5	compliance (1) 17:8	cover (1) 9:23	documents (3) 4:17;7:15;13:3
CHAIRMAN (5) 3:1,14,18;21:6,9	concern (2) 14:17;20:2	critical (1) 17:1	Donald (1) 2:5
challenge (1) 17:22	concerning (2) 4:7;10:18	cuckoo (3) 9:15,16,18	draft (3) 3:4;4:7,17
challenges (1) 5:2	conclude (2) 13:3;20:22	Cumulative (1) 11:23	drawn (1) 17:14
changes (1) 19:6	concluded (1) 21:12	curlew (1) 9:13	Drive (1) 15:12
Chapter (3) 9:4,7;11:22	concludes (1) 7:17	current (3) 8:24;11:6,24	driving (1) 15:4
character (2) 11:12,14	conduct (1) 3:4	currently (1) 16:13	due (4) 9:21,22;10:6;11:1
cheering (1) 5:4	conducted (1) 9:15	cut (1) 14:22	duplicate (1) 18:12
Chicago (1) 16:9	confirmation (1) 12:14		during (6) 4:19;5:5,11;6:5;11:2;13:21
Circular (1) 8:12	Consequences (1) 9:6	D	E
citizenry (1) 19:9	consideration (1) 17:13	dating (1) 10:24	early (1) 17:9
City (1) 6:17	considered (1) 11:20	Dave (1) 6:12	East (2) 15:11;17:11
Clark (1) 2:11	CONSULTANT (4) 2:12;4:15;5:13;13:2	David (3) 2:15;14:14;20:10	Eccles (6) 10:2,4,5,8,25;19:14
Clean (3) 7:8,9;11:21	consultants (1) 14:2	day (1) 7:18	Economic (2) 19:3;20:5
clear (2) 3:17,19	consultation (2) 11:3,18	debate (1) 14:4	effect (10) 9:12,18;10:5,6,8,11,21,25; 11:8,13
clearcut (1) 14:25	contribute (1) 9:10	deemed (1) 10:20	effective (1) 16:12
clearly (1) 4:22	control (1) 7:25	defined (1) 14:20	efforts (2) 17:4;19:12
clock (1) 21:2	conversion (2) 11:16,19	Department (1) 7:7	either (1) 12:3
close (4) 10:16;14:7;17:18;21:3	converted (1) 10:19	departure (8) 8:5,13,13,15;17:6,7,11,24	electronic (1) 5:11
closed (2) 5:10;20:20	Cooley (1) 2:9	depicted (2) 16:25;17:12	Elgee (16) 2:1;3:8,23,24;13:14,15; 15:10,13;16:16;18:25;19:18; 20:8,12,15,25;21:11
Cockpit (1) 16:20	cooperation (1) 4:12	described (1) 9:6	eliminating (1) 17:22
collectively (1) 11:24	Corporation (1) 19:3	determination (1) 10:9	elimination (1) 16:25
Combatale (1) 11:5	Corps (1) 11:19	determined (2) 9:12;11:19	else (4)
combined (1) 7:15		Development (1) 19:3	
comment (20)		diagram (2) 17:1,14	

13:18;19:19;20:15;21:1	7:23;8:22,23	FMAA (1)	9:16
e-mail (4)	extensions (1)	3:2	Hailey (5)
12:11,12,16,16	18:19	focus (1)	4:10;6:17;14:16;15:5,12
E-mailed (1)		18:17	hall (1)
12:14	F	following (3)	12:25
emergent (1)		4:12;12:2,4	Hat (4)
11:17	FAA (8)	foreground (1)	10:3,4,8,25
emotional (2)	6:22;7:4,5;8:15;13:1;14:1;	15:6	hawk (1)
4:25;5:4	17:7;20:2	forested (2)	9:11
encompassing (1)	facilitate (2)	9:23;11:16	hazard (3)
7:25	3:8;4:1	form (1)	17:4,5,23
encouraged (2)	FACILITATOR (1)	5:4	hazards (1)
13:4;20:5	2:1	formed (1)	17:20
end (5)	factor (1)	6:16	heard (1)
6:7;7:22;8:10,20;14:3	15:20	formulated (1)	4:15
engineer (1)	factors (1)	13:10	Hearing (18)
6:12	15:22	Fosbury (1)	3:4,8;4:7,11,19;5:5,7,10,12,
Engineers (4)	Fairfax (1)	2:8	21:7;18;12:4,5,20,24;13:7;
2:13;5:25;6:13;11:19	2:6	four (1)	15:18;20:23
enjoyed (1)	family (1)	18:6	heat (1)
19:6	19:14	Free (5)	16:10
enjoys (1)	farmhouse (3)	8:1,6,19;9:1,2	help (1)
15:4	10:12,17;11:11	Freedom (1)	19:12
entire (3)	Farmland (2)	16:19	Hi (1)
14:25;17:14;20:1	10:20,20	FRIEDMAN (9)	14:14
environment (2)	farmlands (1)	2:3,10;4:9;5:21;6:10,15,20;	Highway (3)
7:12;9:5	10:18	12:23;14:1	8:7;9:2;10:6
Environmental (16)	farmstead (3)	full (5)	hired (1)
3:4;4:8;5:22,24;6:3,24;7:2,4,	10:7,12;11:12	7:25;8:1,18,25;9:1	3:25
10:9;4:5;10:1;11:2,23;12:21;	fashion (1)	further (1)	Historic (1)
13:11	4:11	20:18	7:9
equates (1)	fear (1)	Furthermore (1)	Historical (1)
10:21	18:10	11:7	10:23
equipment (1)	feasibility (1)	future (4)	hitting (1)
5:11	16:7	8:11;11:24;15:23;18:11	17:5
especially (3)	features (1)		home (1)
14:19;16:9;17:21	19:8	G	18:9
essentially (1)	Federal (3)		hope (1)
15:2	6:22,23;9:10	gains (1)	18:8
et (1)	feet (3)	7:25	
18:15	8:20,24;11:18	general (1)	I
Evaluation (8)	fence (4)	9:19	
3:5;4:8;5:23;6:3;7:3,11;9:25;	8:18,19,23;9:3	given (1)	Idaho (3)
12:22	fencing (3)	4:14	4:10;14:16;15:12
evening (6)	7:23;8:18,23	Glass (1)	identified (1)
3:11,20,24;5:20;6:14;19:1	few (1)	16:20	10:24
Everyone (3)	13:16	goal (1)	identify (1)
4:14;15:4,8	fewer (1)	19:12	7:11
exchanges (1)	16:2	goes (1)	ie (1)
4:25	first (4)	14:5	16:8
excuse (4)	4:21;14:11;15:13;16:1	Good (3)	illustrates (1)
7:20;8:13;9:9;14:15	flight (4)	3:24;5:20;19:1	8:22
exorbitant (1)	16:12,21;17:2;18:16	governing (1)	impact (3)
14:18	flights (3)	14:5	9:9,9;11:21
expand (1)	16:2,4,8	Greenberg (8)	impacted (1)
6:6	floor (2)	2:4;3:1,14,18;20:21,23;21:6,	16:13
expansion (1)	14:8,13	9	impacts (5)
20:6	Fly (4)	guiding (1)	7:4,11,13;11:10,23
explaining (1)	15:17,24;17:8,11	6:25	implementing (1)
5:14	flycatcher (1)		7:6
extend (1)	9:13	H	important (1)
8:17	Flying (7)		15:23
extended (3)	10:3,3,4,5,8,25;16:23	habitat (1)	improved (3)

16:1,7,11 improvements (2) 3:6;4:9 inappropriate (1) 15:2 inbound (1) 17:10 include (5) 7:3;8:24;9:7;10:2,13 includes (1) 8:9 including (1) 6:9 incoming (2) 17:10,24 increased (1) 19:7 increasing (1) 16:3 independent (1) 3:25 Indio (1) 14:15 individual (2) 17:20,21 individuals (1) 12:20 information (3) 6:2;18:3,14 input (1) 18:4 instructions (1) 7:6 instrument (1) 17:12 intend (1) 13:22 interest (1) 4:5 interpretive (1) 10:14 interrupt (1) 13:23 invitation (1) 11:3 involved (2) 15:25;18:12 involves (1) 7:21 issues (3) 4:2,5;16:10 item (1) 3:7	16:8 John (2) 2:17;16:18 J-o-h-n (1) 16:18 joined (1) 6:14 joint (1) 6:16 Judge (18) 2:1;3:8,22,23;4:3;5:16;13:14, 15;15:10,13;16:16;18:25; 19:18;20:8,12,15,25;21:11	linear (1) 11:18 line-of-flight (1) 14:20 link (1) 12:22 listed (1) 12:6 listing (1) 9:10 Little (1) 14:15 LLP (1) 2:11 loads (1) 16:3 local (1) 19:9 located (3) 8:4;9:23,25 location (1) 8:24 long (2) 14:6;19:16 long-billed (1) 9:13 longer (2) 16:8,9 longstanding (1) 19:11 looking (1) 11:24 Loop (1) 16:19 lot (2) 16:23;18:14 low-growing (1) 10:15	10:13 meeting (13) 3:2,3;4:1;12:25;14:2,4,5,6; 20:20,24;21:4,10,12 Member (4) 2:8,9;18:13;19:2 members (4) 5:1,1;6:10,13 Memorandum (1) 10:10 MEMORIAL (9) 2:3,10;4:9;5:21;6:10,15,20; 12:23;14:1 mentioned (2) 15:3;17:7 might (1) 13:19 million (1) 19:8 minimized (1) 7:14 minutes (1) 6:5 Mitchell (1) 6:12 mitigate (2) 10:11;17:4 mitigated (1) 7:14 Mitigation (2) 9:6;10:13 MOA (2) 10:10,13 Mobile (1) 5:10 moderator (1) 3:25 more (5) 6:7;13:16;18:10;19:9;20:6 most (1) 8:2 motion (1) 21:7 mountains (1) 15:6 MRGs (1) 16:5 must (3) 4:24;5:11;12:9
J	K	M	N
Jack (2) 2:18;19:1 Jacob (1) 2:4 James (2) 2:1,11 jet (1)	Keirn (1) 2:5 key (1) 15:20 knowing (2) 17:3,20 known (1) 19:4	mail (1) 12:6 mailed (1) 12:9 maintenance (1) 8:3 manage (1) 6:18 manager (3) 5:24;6:11,13 many (2) 6:25;17:19 March (1) 7:17 market (1) 16:9 May (10) 7:17;8:14;9:7,9,9,20;12:10, 13;14:6;20:2 McCleary (3) 2:7;3:12,16 measures (1)	name (12) 3:24;4:20,21;5:17,18;13:20; 14:10,14;15:14;16:18;19:1; 20:9 names (1) 14:11 National (2) 6:24;7:9 nature (1) 5:8 near (3)

10:7,12;11:11 necessary (1) 18:18 need (2) 14:22;21:7 needed (1) 18:1 NEPA (2) 6:25;7:6 nesting/perching (1) 9:21 newly (1) 14:25 next (1) 19:20 night (2) 17:3,22 Noise (1) 17:8 note (1) 12:9 noted (1) 13:5 noticed (1) 4:3 number (1) 14:18	operations (1) 15:24 operator (1) 16:20 operators (1) 18:22 operator's (1) 16:24 opportunities (2) 9:22;20:5 opportunity (6) 4:15;5:9;12:1,20;13:25;14:3 options (1) 18:6 orange (1) 7:24 order (4) 3:2;7:4,5;10:11 orderly (1) 4:11 outbursts (2) 4:25;5:3 outgoing (1) 17:24 outside (1) 9:3 over (2) 13:14;18:13 overall (2) 14:18;16:5 oversee (1) 4:1 overview (2) 4:16;6:2 owner (1) 16:20	penetrate (2) 8:10,11 people (1) 20:12 per (1) 7:5 percent (1) 10:22 perimeter (1) 8:18 period (3) 7:16,17,19 person (3) 4:23;13:21,24 personal (2) 4:5;5:8 Persons (2) 4:24;5:9 perspective (1) 16:24 pertain (1) 7:2 photo (1) 9:11 pilot (1) 18:2 pilots (1) 16:23 pilot's (1) 17:16 places (1) 8:19 Plan (2) 10:13;16:12 planning (1) 11:7 please (7) 4:20,21,22;12:8;13:23;14:9, 10 pm (3) 12:13;21:3,12 podium (1) 14:9 Pogue (1) 2:11 policies (3) 7:1,2,5 Policy (2) 6:24;20:7 portion (3) 8:6;9:1;21:4 possible (1) 18:18 postmarked (1) 12:9 potential (1) 7:11 potentially (1) 9:7 PowerPoint (1) 6:4 powers (1) 6:16	prepared (1) 7:11 presence/absence (1) 9:14 present (4) 4:14;6:9;9:17;12:5 presentation (7) 4:16;5:2,14;6:5,7;12:4;20:1 presented (5) 4:5,17;6:2;12:21,25 Preservation (1) 7:9 primary (1) 17:2 Prime (2) 10:19,20 privilege (1) 16:22 procedure (2) 4:13;8:15 procedures (1) 7:5 proceed (1) 4:11 process (3) 6:7;11:2;18:3 processes (1) 7:1 profitability (1) 16:4 program (2) 16:5;17:9 PROJECT (11) 2:12;4:17;5:13,24;6:12,13, 21:9;17:11;14:14;19:20:1 projects (1) 11:25 property (1) 18:9 proposal (4) 5:15;14:24;15:21;18:20 proposed (17) 3:5;4:9,16;7:13,20,21;8:5,9, 17:9;9:12,17;11:6,8;12:23; 15:20;18:15 protect (1) 18:18 protecting (1) 17:14 Protection (2) 8:2;18:10 provide (6) 4:20;5:9;8:18;12:1,2;14:22 provided (6) 5:3;13:1,5,7;18:6,19 provides (1) 12:20 providing (1) 10:14 proximity (1) 10:16 PUBLIC (31) 2:14;3:4,9;4:2,6,7,10;5:2,20;
O	P		
Object (5) 8:1,6,19;9:1,2 objects (1) 17:23 obstruction (2) 5:22;15:21 obstructions (1) 8:4 obtain (1) 17:17 offered (1) 4:16 offers (1) 15:5 offices (1) 18:2 olive-sided (1) 9:13 once (2) 19:20;20:16 one (6) 4:23;11:20;13:24;15:6;20:7; 21:1 only (5) 3:6,9;4:22;13:23;18:7 oOo- (1) 21:13 open (4) 4:10;5:2;14:8,13 operate (2) 6:18;16:2 operational (1) 16:7	Pacific (3) 5:19;12:7,13 packet (1) 18:7 pagers (1) 5:10 pains (1) 7:6 panels (1) 10:14 Part (3) 8:11;13:8,11 particular (1) 14:7 passenger (1) 16:3 past (2) 4:4;11:24 Pat (1) 2:9 path (4) 14:20;17:6,8,11 paths (1) 17:24		

6:14;7:18;10:15;12:1,3,5,20, 24;13:1,7,17;14:3,12;15:18; 19:19,20;20:15,17,18,22;21:2,4	10:7;11:1,10;15:21;17:15	safe (1)	8:10;24;15:4
publicly (1)	removed (1)	18:17	southern (1)
4:3	8:14	Safety (9)	7:22
purchased (1)	removing (2)	8:1,25;14:22;15:19;17:18; 18:19;19:7,15;20:1	speak (3)
14:25	10:12;11:17	scale (1)	4:22,23;19:5
purpose (3)	repeat (1)	14:19	special (2)
3:3,9;4:1	replanting (1)	scenic (1)	3:2;20:23
purposes (1)	10:15	15:7	species (2)
17:17	representatives (1)	scheduled (1)	9:20;10:16
	14:2	14:7	spell (3)
Q	require (1)	schedules (1)	4:21;14:10;15:13
	17:15	16:12	spent (1)
qualified (1)	required (1)	school (2)	19:8
17:2	7:16	16:21;18:16	Spokane (2)
quite (1)	requirement (1)	scrub-shrub (1)	5:19;12:8
17:22	14:21	11:16	sponsor (1)
quote (2)	requirements (1)	Second (1)	6:21
17:17,18	11:7	16:7	staff (2)
	requires (3)	Secretary (3)	3:10;6:12
R	17:3,4,11	2:7;3:12,16	stage (1)
	resources (6)	Section (9)	16:8
Ranch (7)	9:7,8;10:2,23;11:13,15	3:5;4:8;5:23;6:3;7:7;9:25; 10:2;11:22;12:22	stakeholders (1)
10:3,3,4,5,8,22;11:1	respect (1)	seems (1)	6:9
reading (1)	11:10	14:18	Standard (2)
20:12	respond (2)	sense (1)	12:13;17:23
real (2)	3:10,20	20:4	start (1)
3:17,19	response (1)	sent (1)	13:17
really (1)	12:14	11:3	started (1)
19:11	responses (2)	serves (1)	7:17
receive (1)	13:5,9	6:21	state (4)
12:14	restrictions (2)	services (1)	13:19,20;14:10;20:8
received (4)	16:2,14	6:19	stating (1)
10:4,6,8;13:7	retired (1)	setting (1)	4:20
record (4)	4:4	11:12	stenographer (3)
12:16;13:8,10,24	returning (1)	sharing (1)	4:18,22;13:23
recording (1)	18:11	6:1	stop (1)
4:18	review (1)	short (1)	13:23
records (1)	12:21	14:6	Strauss (3)
18:5	reviewing (1)	Shoshone-Bannock (1)	2:17;16:18,18
red-tailed (1)	18:6	11:4	S-t-r-a-u-s-s (1)
9:11	Richard (1)	shown (5)	16:19
reducing (1)	2:8	7:24;8:21;9:11;12:12,17	strong (1)
16:4	Ridge (1)	shrub (1)	18:21
refrain (1)	15:11	10:16	structured (1)
4:24	right (3)	signed (1)	12:24
regional (1)	3:1,22;17:9	10:11	student (1)
16:8	River (1)	significant (3)	17:1
regulation (1)	9:24	9:22;10:21;11:8	submitted (1)
6:25	Robert (2)	silenced (1)	13:6
reiterate (1)	2:1;3:24	5:11	success (2)
15:22	Ronald (1)	site (1)	15:23;19:6
relevant (2)	2:6	15:1	suggestion (1)
5:7;7:1	roughly (1)	six-slide (1)	18:7
relocation (1)	6:4	6:4	Suitable (1)
18:15	run (1)	slide (6)	9:16
remain (1)	16:6	7:25;8:21,22;12:7,12,18	Suite (2)
9:3	Runway (13)	slowly (1)	5:19;12:8
remarks (1)	7:23;8:1,1,2,6,10,16,19,20, 25;9:1,2;18:19	4:22	summer (2)
15:18		someone (1)	9:14;16:9
removal (11)	S	13:18	Sun (4)
5:22;7:23;8:9,14;9:20,21;		south (3)	15:17,24,24;19:3
			support (4)
			9:16;17:16;18:4,21

Sure (1) 16:17 Surface (2) 8:12,13 surfaces (2) 8:5,13 surveys (1) 9:15 SVED (2) 19:4,12	17:1 training (1) 17:2 transcriptionist (1) 12:5 Transportation (1) 7:8 tread (1) 15:8 Treasurer (1) 2:6 tree (4) 7:23;8:14;9:20;10:7 trees (11) 8:10,14;10:12;11:1,11,17; 14:18,22;16:25;17:5,16 tremendous (1) 19:15 Tribes (1) 11:4 truly (1) 15:6 Tuesday (1) 3:2 turn (2) 13:13;17:9 twice (1) 20:16 two (1) 4:17 type (1) 11:20	11:9 viewed (1) 11:24 views (1) 15:7 Vince (4) 2:13;5:13,17,24 V-i-n-c-e (1) 5:17 visitors (1) 19:10 visual (4) 11:10,12,13,14 visually (1) 17:8 voicing (1) 18:21	wondering (1) 14:24 Wood (1) 9:24 work (1) 18:11 written (1) 12:3 wrong (1) 20:2
T			Y
takeoff (1) 14:23 talking (1) 13:24 telephones (1) 5:10 temperature (1) 16:10 ten (3) 6:5;16:22;18:13 term (1) 19:16 terms (8) 9:8,19;10:23;11:5,15;14:19; 18:14;20:5 testimony (1) 13:6 thereby (1) 16:3 Therefore (2) 4:19;18:21 third (2) 16:11;20:16 Thirdly (1) 12:11 thousand (1) 8:20 three (1) 12:2 thrilled (1) 18:16 titled (1) 9:5 today (1) 12:3 tonight (4) 3:7;6:1,9;19:5 Tonight's (1) 7:18 total (2) 10:19,22 totally (1) 18:16 toward (1) 17:9 town (2) 12:25;15:7 traffic (2) 17:10;20:6 train (1)	U under (1) 6:25 unfortunately (1) 17:15 up (4) 8:7,13;15:4;17:2 Use (3) 11:5,6,9	W walk (1) 6:5 wall (1) 21:2 Waller (4) 2:16;15:11,11,15 W-a-l-l-e-r (1) 15:15 Washington (2) 5:19;12:8 Water (3) 7:8;11:15,21 ways (1) 12:2 welcome (2) 5:20;18:4 welcomed (1) 13:4 West (5) 5:18;9:23;10:5;12:7;17:10 wetland (1) 11:20 wetlands (2) 11:16,17 who's (1) 6:12 wider (1) 17:11 width (1) 9:2 wildlife (1) 9:19 windrow (2) 10:7;11:1 wish (5) 4:19;14:10,12;20:17,20 wishes (1) 21:2 wishing (2) 19:19;20:15 within (7) 8:4;9:17;10:1,13;11:9,22; 13:10	years (3) 4:4;16:22;18:14 yellow-billed (3) 9:15,16,18 yield (1) 11:13
			Z
			Zone (1) 8:2 zoning (1) 11:7
			1
			1 (1) 10:22 1050.1F (1) 7:4 121 (2) 5:18;12:7 13 (1) 8:16 161 (1) 14:15 1882 (1) 10:24 1966 (1) 7:8
			2
			2,691 (1) 11:17 200 (4) 5:19;8:14;12:8;14:18 2017 (1) 9:14 2019 (3) 3:3;12:10,13 20th (1) 7:17 23rd (1) 3:3 25 (1) 4:4
			3
	V Valley (3) 15:17,24;19:3 value (1) 15:3 vbarthels@to-engineerscom (1) 12:17 vegetation (1) 9:19 verbal (1) 12:3 viability (1) 16:4 viable (1) 19:9 Vice (1) 2:5 vicinity (1)		

31 (1) 7:23 35 (1) 7:18 3rd (3) 7:17;12:10,13			
4			
4 (2) 9:4;11:22 4.15 (1) 11:22 400 (1) 8:24 45-day (1) 7:16 4f (10) 3:5;4:8;5:23;6:3;7:3,7,10; 9:25;10:2;12:22			
5			
5:00 (1) 12:13 5050.4 (1) 7:5 5300-13A (1) 8:12			
6			
6.5 (3) 8:24;10:18,21 6:02 (1) 21:3 6:03 (1) 21:12 620 (1) 15:11 64.6 (1) 7:22			
7			
73 (1) 16:19 75 (3) 8:7;9:2;10:6 77 (1) 8:11			
8			
83313 (1) 16:19			
9			
99201 (2) 5:19;12:8			

Friedman Memorial Airport

Profit & Loss Budget vs. Actual (COMBINED '19)

	Oct '18 - Feb 19	Budget	\$ Over Budget	% of Budget
Income				
4000-00 · AIRCARRIER				
4000-01 · Aircarrier - Lease Space	35,216.90	145,831.00	-110,614.10	24.1%
4000-02 · Aircarrier - Landing Fees	77,890.88	80,500.00	-2,609.12	96.8%
4000-03 · Aircarrier - Gate Fees	500.00	0.00	500.00	100.0%
4000-04 · Aircarrier - Utility Fees	150.00	15,000.00	-14,850.00	1.0%
4010-07 · Aircarrier - '14 PFC App	187,799.59	169,700.00	18,099.59	110.7%
Total 4000-00 · AIRCARRIER	301,557.37	411,031.00	-109,473.63	73.4%
4020-00 · TERMINAL AUTO PARKING REVENUE				
4020-01 · Automobile Parking - Terminal	196,076.00	190,000.00	6,076.00	103.2%
Total 4020-00 · TERMINAL AUTO PARKING REVENUE	196,076.00	190,000.00	6,076.00	103.2%
4030-00 · AUTO RENTAL REVENUE				
4030-01 · Automobile Rental - Commission	225,340.25	235,000.00	-9,659.75	95.9%
4030-02 · Automobile Rental - Lease Space	11,788.80	11,727.10	61.70	100.5%
4030-03 · Automobile Rental - Auto Prkng	46,110.00	41,999.80	4,110.20	109.8%
4030-04 · Automobile Rental - Utilities	7,011.51	900.00	6,111.51	779.1%
Total 4030-00 · AUTO RENTAL REVENUE	290,250.56	289,626.90	623.66	100.2%
4040-00 · TERMINAL CONCESSION REVENUE				
4040-01 · Terminal Shops - Commission	4,055.15	2,083.38	1,971.77	194.6%
4040-02 · Terminal Shops - Lease Space	0.00	0.00	0.00	0.0%
4040-03 · Terminal Shops - Utility Fees	0.00	750.00	-750.00	0.0%
4040-10 · Advertising - Commission	21,024.40	26,000.00	-4,975.60	80.9%
4040-11 · Vending Machines - Commission	4,880.68	7,000.00	-2,119.32	69.7%
4040-12 · Terminal ATM	525.00	375.00	150.00	140.0%
Total 4040-00 · TERMINAL CONCESSION REVENUE	30,485.23	36,208.38	-5,723.15	84.2%
4050-00 · FBO REVENUE				
4050-01 · FBO - Lease Space	78,955.58	78,930.00	25.58	100.0%
4050-02 · FBO - Tiedown Fees	83,365.65	100,000.00	-16,634.35	83.4%
4050-03 · FBO - Landing Fees - Trans.	128,166.78	145,000.00	-16,833.22	88.4%
4050-04 · FBO - Commission	12,967.24	12,000.00	967.24	108.1%
4050-07 · FBO - Miscellaneous	0.00	0.00	0.00	0.0%
Total 4050-00 · FBO REVENUE	303,455.25	335,930.00	-32,474.75	90.3%
4060-00 · FUEL FLOWAGE REVENUE				
4060-01 · Fuel Flowage - FBO	133,806.69	139,000.00	-5,193.31	96.3%
Total 4060-00 · FUEL FLOWAGE REVENUE	133,806.69	139,000.00	-5,193.31	96.3%
4070-00 · TRANSIENT LANDING FEES REVENUE				
4070-01 · Landing Fees - Commercial	483.32			
4070-02 · Landing Fees - Non-Comm./Gov't	218.82	0.00	218.82	0.0%
Total 4070-00 · TRANSIENT LANDING FEES REVENUE	702.14	0.00	702.14	100.0%

Friedman Memorial Airport

Profit & Loss Budget vs. Actual (COMBINED '19)

	Oct '18 - Feb 19	Budget	\$ Over Budget	% of Budget
4080-00 · HANGAR REVENUE				
4080-01 · Land Lease - Hangar	293,128.18	303,675.00	-10,546.82	96.5%
4080-02 · Land Lease - Hangar/Trans. Fee	8,016.25	0.00	8,016.25	100.0%
4080-03 · Hangar/Utilities (E8,11,24)	0.00	900.00	-900.00	0.0%
4080-05 · Land Lease - FMA Hangar Rentals	16,866.08	17,500.00	-633.92	96.4%
Total 4080-00 · HANGAR REVENUE	318,010.51	322,075.00	-4,064.49	98.7%
4090-00 · TIEDOWN PERMIT FEES REVENUE				
4090-01 · Tiedown Permit Fees (FMA)	11,971.59	10,000.00	1,971.59	119.7%
Total 4090-00 · TIEDOWN PERMIT FEES REVENUE	11,971.59	10,000.00	1,971.59	119.7%
4100-00 · CARGO CARRIERS REVENUE				
4100-01 · Cargo Carriers - Landing Fees	4,420.06	4,300.00	120.06	102.8%
4100-02 · Cargo Carriers - Tiedown	2,970.00	3,000.00	-30.00	99.0%
Total 4100-00 · CARGO CARRIERS REVENUE	7,390.06	7,300.00	90.06	101.2%
4110-00 · MISCELLANEOUS REVENUE				
4110-01 · Misc. Revenue	90.36	0.00	90.36	100.0%
4110-05 · Misc. Incident/Accident	0.00	0.00	0.00	0.0%
4110-09 · Miscellaneous Expense Reimburse	8.75	0.00	8.75	100.0%
Total 4110-00 · MISCELLANEOUS REVENUE	99.11	0.00	99.11	100.0%
4120-00 · GROUND TRANSP. PERMIT REVENUE				
4120-01 · Ground Transportation Permit	18,600.00	19,000.00	-400.00	97.9%
4120-02 · GTSP - Trip Fee	2,160.00	2,083.38	76.62	103.7%
Total 4120-00 · GROUND TRANSP. PERMIT REVENUE	20,760.00	21,083.38	-323.38	98.5%
4400-00 · TSA/SECURITY				
4400-02 · Terminal Lease	16,818.75	16,825.00	-6.25	100.0%
4400-03 · Security Prox. Cards	24,930.00	22,000.00	2,930.00	113.3%
Total 4400-00 · TSA/SECURITY	41,748.75	38,825.00	2,923.75	107.5%
4500-00 · IDAHO STATE GRANT PROGRAM REV.				
4500-18 · SUN-18 SKW E-175 Certification	25,000.00	25,000.00	0.00	100.0%
Total 4500-00 · IDAHO STATE GRANT PROGRAM REV.	25,000.00	25,000.00	0.00	100.0%
4510-00 · DOT/Small Community Air Service				
4510-01 · Small Community Air Service	0.00	369,700.00	-369,700.00	0.0%
4510-02 · Local Match Contribution	0.00	0.00	0.00	0.0%
Total 4510-00 · DOT/Small Community Air Service	0.00	369,700.00	-369,700.00	0.0%
4520-00 · INTEREST REVENUE				
4520-01 · Interest Revenue - General	23,621.64	0.00	23,621.64	100.0%
4520-07 · Interest Revenue - '14 PFC	25.32	20.85	4.47	121.4%
Total 4520-00 · INTEREST REVENUE	23,646.96	20.85	23,626.11	113,414.7%

Friedman Memorial Airport

Profit & Loss Budget vs. Actual (COMBINED '19)

	Oct '18 - Feb 19	Budget	\$ Over Budget	% of Budget
4742-00 · AIP 42 - Project Air Carr. Apr				
4742-01 · AIP '42 Air Carr. Apron	25,566.99	0.00	25,566.99	100.0%
Total 4742-00 · AIP 42 - Project Air Carr. Apr	25,566.99	0.00	25,566.99	100.0%
4743-00 · AIP 43 - Air Carrier /Pkg. Lot				
4743-01 · AIP 43 - Air Carrier/Pkg. Lot	330,959.26	0.00	330,959.26	100.0%
Total 4743-00 · AIP 43 - Air Carrier /Pkg. Lot	330,959.26	0.00	330,959.26	100.0%
4744-00 · AIP '44 RPZ Acquisition EA				
4744-01 · AIP '44 - RPZ Acquisition - EA	2,866.78	0.00	2,866.78	100.0%
4744-00 · AIP '44 RPZ Acquisition EA - Other	0.00	0.00	0.00	0.0%
Total 4744-00 · AIP '44 RPZ Acquisition EA	2,866.78	0.00	2,866.78	100.0%
4745-00 · AIP '45 Terminal Apron Expan				
4745-01 · AIP '45 Terminal Apron Expan	503,143.10	0.00	503,143.10	100.0%
Total 4745-00 · AIP '45 Terminal Apron Expan	503,143.10	0.00	503,143.10	100.0%
4746-00 · AIP '46 Acquire SRE ARFF				
4746-01 · AIP '46 Acquire SRE ARFF	8,675.67	0.00	8,675.67	100.0%
4746-00 · AIP '46 Acquire SRE ARFF - Other	0.00	0.00	0.00	0.0%
Total 4746-00 · AIP '46 Acquire SRE ARFF	8,675.67	0.00	8,675.67	100.0%
Total Income	2,576,172.02	2,195,800.51	380,371.51	117.3%
Gross Profit	2,576,172.02	2,195,800.51	380,371.51	117.3%
Expense				
EXPENDITURES				
"A" EXPENSES				
5000-01 · Salaries - Airport Manager	63,449.98	61,821.41	1,628.57	102.6%
5000-02 · Salaries - Assist. Airpt. Manag	0.00	0.00	0.00	0.0%
5010-00 · Salaries -Contracts/Finance Adm	56,952.29	44,340.69	12,611.60	128.4%
5010-01 · Salaries - Office Assist.	105,542.03	87,259.55	18,282.48	121.0%
5020-00 · Salaries - ARFF/OPS Manager	48,737.55	42,926.25	5,811.30	113.5%
5030-00 · Salaries - ARFF/OPS Specialist	182,596.30	176,031.13	6,565.17	103.7%
5040-00 · Salaries-ASC/Sp.Prjct./Ex. Assi	36,290.38	33,024.60	3,265.78	109.9%
5050-00 · Salaries-Seasonal-Snow Removal	18,972.00	26,666.68	-7,694.68	71.1%
5050-01 · Salaries - Seasonal - Arpt Host	3,814.00	3,500.00	314.00	109.0%
5050-02 · Salaries - Merit Increase	0.00	26,892.45	-26,892.45	0.0%
5060-01 · Overtime - General	0.00	0.00	0.00	0.0%
5060-02 · Overtime - Snow Removal	29,481.55	14,000.00	15,481.55	210.6%
5060-04 · OT - Security	0.00	0.00	0.00	0.0%
5100-00 · Retirement	60,088.88	66,582.38	-6,493.50	90.2%
5110-00 · Social Security/Medicare	39,097.49	45,092.00	-5,994.51	86.7%
5120-00 · Life Insurance	738.25	833.35	-95.10	88.6%
5130-00 · Medical Insurance	68,930.10	91,875.00	-22,944.90	75.0%

Friedman Memorial Airport

Profit & Loss Budget vs. Actual (COMBINED '19)

	Oct '18 - Feb 19	Budget	\$ Over Budget	% of Budget
5160-00 · Workman's Compensation	17,010.00	6,665.00	10,345.00	255.2%
5170-00 · Unemployment Claims	961.88	0.00	961.88	100.0%
Total "A" EXPENSES	732,662.68	727,510.49	5,152.19	100.7%
"B" EXPENDITURES				
"B" EXPENSES - ADMINISTRATIVE				
6000-00 · TRAVEL EXPENSE				
6000-01 · Travel	9,972.79	11,750.00	-1,777.21	84.9%
Total 6000-00 · TRAVEL EXPENSE	9,972.79	11,750.00	-1,777.21	84.9%
6010-00 · SUPPLIES/EQUIPMENT EXPENSE				
6010-01 · Supplies - Office	5,140.00	4,581.00	559.00	112.2%
6010-03 · Supplies - Computer	5,506.73	5,415.00	91.73	101.7%
Total 6010-00 · SUPPLIES/EQUIPMENT EXPENSE	10,646.73	9,996.00	650.73	106.5%
6020-00 · INSURANCE				
6020-01 · Insurance - Liability	9,401.00	50,692.00	-41,291.00	18.5%
6020-03 · Insurance-Bldg/Unlic.Veh./Prop	15,945.00			
Total 6020-00 · INSURANCE	25,346.00	50,692.00	-25,346.00	50.0%
6030-00 · UTILITIES				
6030-01 · Utilities - Gas/Terminal	6,247.73	8,331.00	-2,083.27	75.0%
6030-02 · Utilities - Gas/AOB & Cold Stor	2,005.00	3,956.00	-1,951.00	50.7%
6030-03 · Utilities - Elect./Runway&PAPI	2,879.08	3,415.00	-535.92	84.3%
6030-04 · Utilities - Elec./AOB & Cold St	3,177.05	3,957.00	-779.95	80.3%
6030-05 · Utilities - Electric/Terminal	26,365.70	18,500.00	7,865.70	142.5%
6030-06 · Utilities - Telephone	7,725.98	6,665.00	1,060.98	115.9%
6030-07 · Utilities - Water	1,377.68	6,665.00	-5,287.32	20.7%
6030-08 · Utilities - Garbage Removal	6,198.98	4,165.00	2,033.98	148.8%
6030-09 · Utilities - Sewer	1,410.95	1,665.00	-254.05	84.7%
6030-11 · Utilities - Electric/Tower	2,712.96	2,625.00	87.96	103.4%
6030-12 · Utilities - Elec./Brdfld.Hghl	203.09	206.00	-2.91	98.6%
6030-13 · Utilities - Elec. Exit Booth	1,313.31			
6030-15 · Utilities - Elec/AWOS	1,817.37	1,415.00	402.37	128.4%
6030-16 · Utilities - Elec. Wind Cone	51.62	62.50	-10.88	82.6%
6030-17 · Utilities - Elec./Gas- Hangar	1,580.72	1,915.00	-334.28	82.5%
6030-18 · Utilities - Lubricant Wst. Dspl	0.00	208.31	-208.31	0.0%
6030-00 · UTILITIES - Other	0.00			
Total 6030-00 · UTILITIES	65,067.22	63,750.81	1,316.41	102.1%
6040-00 · SERVICE PROVIDER				
6040-02 · Service Provider - Term. Serv.	1,923.03	2,875.00	-951.97	66.9%
6040-03 · Service Provider - AOB Services	25,702.56	18,040.00	7,662.56	142.5%
6040-04 · Service Provider - Operations	13,350.00	6,810.00	6,540.00	196.0%
Total 6040-00 · SERVICE PROVIDER	40,975.59	27,725.00	13,250.59	147.8%

Friedman Memorial Airport

Profit & Loss Budget vs. Actual (COMBINED '19)

	Oct '18 - Feb 19	Budget	\$ Over Budget	% of Budget
6050-00 · PROFESSIONAL SERVICES				
6050-01 · Professional Services - Legal	14,537.20	20,831.00	-6,293.80	69.8%
6050-02 · Professional Serv. - Audit/Fina	39,272.56	50,000.00	-10,727.44	78.5%
6050-03 · Professional Services - Engineer	5,988.25	6,250.00	-261.75	95.8%
6050-05 · Professional Services - Gen.	3,080.00	4,165.00	-1,085.00	73.9%
6050-10 · Prof. Svcs.-IT/Comp. Support	5,616.75	6,250.00	-633.25	89.9%
6050-12 · Prof. Serv.- Planning Air Serv.	1,025.00	0.00	1,025.00	100.0%
6050-13 · Prof. Serv.-Website Des.& Maint	920.00	1,666.00	-746.00	55.2%
6050-15 · Prof. Serv.-Comm.Coord/Pub.Outr	475.00	19,581.00	-19,106.00	2.4%
6050-17 · Prof. Serv. - Airspace Consult.	718.10	0.00	718.10	100.0%
6050-19 · Prof. Serv.-ATCT Relocation	5,210.00			
Total 6050-00 · PROFESSIONAL SERVICES	76,842.86	108,743.00	-31,900.14	70.7%
6060-00 · MAINTENANCE-OFFICE EQUIPMENT				
6060-04 · Maintenance - Copier	694.20	1,040.00	-345.80	66.8%
6060-05 · Maintenance - Phone	1,262.65	520.00	742.65	242.8%
Total 6060-00 · MAINTENANCE-OFFICE EQUIPMENT	1,956.85	1,560.00	396.85	125.4%
6070-00 · RENT/LEASE OFFICE EQUIPMENT				
6070-02 · Rent/Lease - Postage Meter	273.30	0.00	273.30	100.0%
Total 6070-00 · RENT/LEASE OFFICE EQUIPMENT	273.30	0.00	273.30	100.0%
6080-00 · DUES/MEMBERSHIPS/PUBLICATIONS E				
6080-01 · Dues/Memberships	1,331.82	2,500.00	-1,168.18	53.3%
6080-04 · Publications	3,642.97	2,081.00	1,561.97	175.1%
Total 6080-00 · DUES/MEMBERSHIPS/PUBLICATIONS E	4,974.79	4,581.00	393.79	108.6%
6090-00 · POSTAGE				
6090-01 · Postage/Courier Service	689.07	831.00	-141.93	82.9%
Total 6090-00 · POSTAGE	689.07	831.00	-141.93	82.9%
6100-00 · EDUCATION/TRAINING				
6100-01 · Education/Training - Admin.	0.00	6,250.00	-6,250.00	0.0%
6100-02 · Education/Training - OPS	638.18	4,165.00	-3,526.82	15.3%
6100-03 · Education/Training - ARFF	8,830.76	0.00	8,830.76	100.0%
6100-05 · Education - Noise Abatement	0.00	0.00	0.00	0.0%
6100-06 · Education - Security	0.00	2,081.00	-2,081.00	0.0%
6100-07 · Education - Public Outrea/Comm.	250.00	0.00	250.00	100.0%
6100-08 · Education/Training - HFD Coop.	0.00	2,500.00	-2,500.00	0.0%
6100-09 · Education - SAAC	1,437.50			
6100-00 · EDUCATION/TRAINING - Other	0.00			
Total 6100-00 · EDUCATION/TRAINING	11,156.44	14,996.00	-3,839.56	74.4%

Friedman Memorial Airport

Profit & Loss Budget vs. Actual (COMBINED '19)

	Oct '18 - Feb 19	Budget	\$ Over Budget	% of Budget
6101-00 · PUBLIC OUTREACH/COMMUNICATIONS				
6101-01 · Public Outr/Comm - General	12,706.19	13,750.00	-1,043.81	92.4%
6101-02 · Public Outr/Comm - Noise Abatem	0.00	250.00	-250.00	0.0%
6101-03 · Public Outr/Comm - SAAC	2,477.24	3,500.00	-1,022.76	70.8%
Total 6101-00 · PUBLIC OUTREACH/COMMUNICATIONS	15,183.43	17,500.00	-2,316.57	86.8%
6110-00 · CONTRACTS				
6110-01 · Contracts - General	0.00	500.00	-500.00	0.0%
6110-02 · Contracts - FMAA	17,500.00	17,500.00	0.00	100.0%
6110-03 · Contracts - FBO/Fee Collection	24,500.00	24,540.00	-40.00	99.8%
6110-08 · Contracts - Eccles Tree Lights	7,500.00			
6110-16 · Contracts - Prkg Mngt Fee/Ops	143,688.57	75,000.00	68,688.57	191.6%
Total 6110-00 · CONTRACTS	193,188.57	117,540.00	75,648.57	164.4%
6130-00 · MISCELLANEOUS EXPENSES				
6130-01 · Misc. - General	11,557.51	6,250.00	5,307.51	184.9%
6140-00 · Bank Fees	7,425.03	625.00	6,800.03	1,188.0%
6150-01 · Interest Exp. - Prkg. Lot Equip	3,298.77	2,750.00	548.77	120.0%
Total 6130-00 · MISCELLANEOUS EXPENSES	22,281.31	9,625.00	12,656.31	231.5%
6400-00 · DOT/SCASGP				
6400-01 · DOT/SCASGP	0.00	365,000.00	-365,000.00	0.0%
Total 6400-00 · DOT/SCASGP	0.00	365,000.00	-365,000.00	0.0%
Total "B" EXPENSES - ADMINISTRATIVE	478,554.95	804,289.81	-325,734.86	59.5%
"B" EXPENSES - OPERATIONAL				
6500-00 · SUPPLIES/EQUIPMENT-OPERATIONS				
6500-01 · Supplies/Equipment - General	2,826.20	2,081.00	745.20	135.8%
6500-02 · Supplies/Equipment - Tools	1,767.68	2,081.00	-313.32	84.9%
6500-03 · Supplies/Equipment - Clothing	2,358.78	2,081.00	277.78	113.3%
6500-04 · Supplies/Equipment - Janitorial	8,264.30	8,331.00	-66.70	99.2%
Total 6500-00 · SUPPLIES/EQUIPMENT-OPERATIONS	15,216.96	14,574.00	642.96	104.4%
6505-00 · EQUIP/VEHICLE - LEASE/RENTAL				
6505-01 · Eq./Vehi Lease/Rental - General	48,559.84	33,332.00	15,227.84	145.7%
Total 6505-00 · EQUIP/VEHICLE - LEASE/RENTAL	48,559.84	33,332.00	15,227.84	145.7%
6510-00 · FUEL/LUBRICANTS				
6510-01 · General	0.00	831.00	-831.00	0.0%
6510-02 · Fuel	32,545.97	18,750.00	13,795.97	173.6%
6510-03 · Lubricants	0.00	2,081.00	-2,081.00	0.0%
Total 6510-00 · FUEL/LUBRICANTS	32,545.97	21,662.00	10,883.97	150.2%

Friedman Memorial Airport

Profit & Loss Budget vs. Actual (COMBINED '19)

	Oct '18 - Feb 19	Budget	\$ Over Budget	% of Budget
6520-00 · VEHICLES/MAINTENANCE				
6520-01 · R/M Equipment - General	5,668.09	7,500.00	-1,831.91	75.6%
6520-06 · R/M Equip. - '85 Ford Dump	0.00	500.00	-500.00	0.0%
6520-08 · R/M Equip. - '96 Tiger Tractor	262.81	2,750.00	-2,487.19	9.6%
6520-09 · R/M Equip. - '96 Oshkosh Swp.	1,344.00	9,725.00	-8,381.00	13.8%
6520-17 · R/M Equip. - '01 Case 921 Ldr.	415.39	2,200.00	-1,784.61	18.9%
6520-18 · R/M Equip. - '97 Chevy Blazer	0.00	1,900.00	-1,900.00	0.0%
6520-19 · R/M Equip. - '02 Ford F-150 PU	677.33	1,150.00	-472.67	58.9%
6520-20 · R/M Equip. - '02 Kodiak Blower	162.03	900.00	-737.97	18.0%
6520-25 · R/M Equip. - '04 Batts De-Ice	0.00	1,000.00	-1,000.00	0.0%
6520-28 · R/M Equip. - '06 Case 621 Loader	9,157.17	1,975.00	7,182.17	463.7%
6520-29 · R/M Equip. - '10 Waus Broom/Plow	12,073.72	10,500.00	1,573.72	115.0%
6520-30 · R/M Equip. - '05 Ford F-350	1,559.18	1,575.00	-15.82	99.0%
6520-31 · R/M Equip. - '10 Oshkosh Blower	1,280.29	2,950.00	-1,669.71	43.4%
6520-32 · R/M Equip. - '09 Mini Truck	127.98	200.00	-72.02	64.0%
6520-34 · R/M Equip. - '12 Case 921F Load	2,265.35	1,900.00	365.35	119.2%
6520-35 · R/M Equip. - '14 Ford Explorer	1,053.73	450.00	603.73	234.2%
6520-36 · R/M Equip. - '10 Toyota Forklif	0.00	225.00	-225.00	0.0%
6520-37 · R/M Equip. - '15 Tool Cat	773.95	675.00	98.95	114.7%
6520-38 · R/M Equip. - '15 Wausau Broom	16,187.62	13,050.00	3,137.62	124.0%
6520-39 · R/M Equip. - Boss Spreader	0.00	0.00	0.00	0.0%
6520-40 · R/M Equip. - '17 Ford-350 Super	4,652.30	300.00	4,352.30	1,550.8%
6520-41 · R/M Equip. - '17 Kodiak Blower	28.97	0.00	28.97	100.0%
6520-42 · R/M Equip. - '18 Kodiak Attach.	4.00	450.00	-446.00	0.9%
6520-43 · R/M Equip. - '18 279D Skid St.	268.57	0.00	268.57	100.0%
6520-44 · R/M Equip. - '18 972M Loader	588.85	0.00	588.85	100.0%
Total 6520-00 · VEHICLES/MAINTENANCE	58,551.33	61,875.00	-3,323.67	94.6%
6530-00 · ARFF MAINTENANCE				
6530-01 · ARFF Maint. Gen/Supplies	1,694.52	5,415.00	-3,720.48	31.3%
6530-03 · ARFF Maint. - '87 Oshkosh	0.00	831.00	-831.00	0.0%
6530-04 · ARFF Maint. - Radios	0.00	2,915.00	-2,915.00	0.0%
6530-05 · ARFF MAInt. - '03 E-One	2,967.80	831.00	2,136.80	357.1%
6530-07 · ARFF Maint. - Supp/HFD Support	0.00	0.00	0.00	0.0%
Total 6530-00 · ARFF MAINTENANCE	4,662.32	9,992.00	-5,329.68	46.7%
6540-00 · REPAIRS/MAINTENANCE - BUILDING				
6540-01 · R/M Bldg. - General	509.00	1,040.00	-531.00	48.9%
6540-02 · R/M Bldg. - Terminal	28,605.78	50,000.00	-21,394.22	57.2%
6540-03 · R/M Bldg. - Terminal Concession	764.42	1,040.00	-275.58	73.5%
6540-04 · R/M Bldg. - Cold Storage	318.50	2,082.00	-1,763.50	15.3%
6540-05 · R/M Bldg. - AOB/SHOP	5,124.21	8,331.00	-3,206.79	61.5%
6540-06 · R/M Bldg. - Hangars	439.27	1,040.00	-600.73	42.2%
6540-07 · R/M Bldg. - Tower	1,058.95	1,457.00	-398.05	72.7%
6540-08 · R/M Bldg. - Parking Booth	884.81	603.00	281.81	146.7%
Total 6540-00 · REPAIRS/MAINTENANCE - BUILDING	37,704.94	65,593.00	-27,888.06	57.5%

Friedman Memorial Airport

Profit & Loss Budget vs. Actual (COMBINED '19)

	Oct '18 - Feb 19	Budget	\$ Over Budget	% of Budget
6550-00 · REPAIRS/MAINTENANCE - AIRSIDE				
6550-01 · R/M - General	1,139.76	2,081.00	-941.24	54.8%
6550-02 · R/M - Airfield/Runway	156,610.48	41,665.00	114,945.48	375.9%
6550-04 · R/M - Lights	9,756.33	5,000.00	4,756.33	195.1%
Total 6550-00 · REPAIRS/MAINTENANCE - AIRSIDE	167,506.57	48,746.00	118,760.57	343.6%
6551-00 · REPAIRS/MAINTENANCE - LANDSIDE				
6551-01 · RM - General	0.00	1,040.00	-1,040.00	0.0%
6551-02 · R/M - Parking Lot	3,333.37	3,331.00	2.37	100.1%
6551-03 · R/M - Landscaping	997.07	4,165.00	-3,167.93	23.9%
Total 6551-00 · REPAIRS/MAINTENANCE - LANDSIDE	4,330.44	8,536.00	-4,205.56	50.7%
6560-00 · SECURITY EXPENSE				
6560-01 · Security - General	1,913.63	3,956.00	-2,042.37	48.4%
6560-02 · Security - Law Enf. Offi. (LEO)	1,360.00	1,665.00	-305.00	81.7%
6560-03 · Security - Subscription Licen.	25,957.00	25,570.00	387.00	101.5%
6560-04 · Security - Perim./Access/CCTV	8,034.18	13,165.00	-5,130.82	61.0%
6560-05 · Security - Professional Serv.	0.00	6,250.00	-6,250.00	0.0%
6560-06 · Security - Prof. Services/IT	2,226.25	3,125.00	-898.75	71.2%
Total 6560-00 · SECURITY EXPENSE	39,491.06	53,731.00	-14,239.94	73.5%
6570-00 · REPAIRS/MAINT.-AERONAUTICAL EQU				
6570-01 · R/M Aeronautical Equip - NDB/DME	4,118.40	5,500.00	-1,381.60	74.9%
6570-02 · R/M Aeronautical Equip. - Tower	2,059.20	4,500.00	-2,440.80	45.8%
6570-03 · R/M Aeronautical Equip.-Swt. Sys	0.00	5,500.00	-5,500.00	0.0%
6570-04 · R/M Aeron. Equip. - AWOS/ATIS	4,118.40	0.00	4,118.40	100.0%
Total 6570-00 · REPAIRS/MAINT.-AERONAUTICAL EQU	10,296.00	15,500.00	-5,204.00	66.4%
Total "B" EXPENSES - OPERATIONAL	418,865.43	333,541.00	85,324.43	125.6%
Total "B" EXPENDITURES	897,420.38	1,137,830.81	-240,410.43	78.9%
"C" EXPENSES				
7001-00 · CAPITAL EXPENDITURES				
7001-0* · CONTINGENCY	0.00	8,331.00	-8,331.00	0.0%
7001-01 · Land	0.00	0.00	0.00	0.0%
7001-02 · Buildings and Improvements	19,005.40	0.00	19,005.40	100.0%
7001-03 · Airfield & General Improvements	0.00	0.00	0.00	0.0%
7001-04 · Office Equipment	0.00	6,700.00	-6,700.00	0.0%
7001-05 · Maintenance Equipment /Vehicle	0.00	0.00	0.00	0.0%
7001-06 · Assessments/Plans/Studies	2,577.32	15,000.00	-12,422.68	17.2%
7001-09 · Security Equipment	0.00	0.00	0.00	0.0%
Total 7001-00 · CAPITAL EXPENDITURES	21,582.72	30,031.00	-8,448.28	71.9%

Friedman Memorial Airport

Profit & Loss Budget vs. Actual (COMBINED '19)

	Oct '18 - Feb 19	Budget	\$ Over Budget	% of Budget
7110-00 · DOT/SCADGP				
7110-01 · DOT/SCASGP	0.00	0.00	0.00	0.0%
7110-02 · DOT/SCASGP - FMAA	0.00	0.00	0.00	0.0%
Total 7110-00 · DOT/SCADGP	0.00	0.00	0.00	0.0%
7500-00 · IDAHO STATE GRANT PROGRAM				
7500-18 · '18 ITD Grant (SUN-17 ITD/FMA)	0.00	0.00	0.00	0.0%
Total 7500-00 · IDAHO STATE GRANT PROGRAM	0.00	0.00	0.00	0.0%
7541-00 · AIP 41 SA Ph. III -Runway/Term.				
7541-01 · AIP '41	0.00	0.00	0.00	0.0%
7541-02 · AIP '41 - Non-Eligible	0.00	0.00	0.00	0.0%
7541-05 · Non-Eligible - TSA	0.00	0.00	0.00	0.0%
7541-06 · Non-Eligible - Terminal	0.00	0.00	0.00	0.0%
7541-07 · AIP '41 RETAINER	0.00	0.00	0.00	0.0%
7541-08 · AIP '41 RETAINER PFC	0.00	0.00	0.00	0.0%
7541-09 · AIP '41 Non-Elig Retainer	0.00	0.00	0.00	0.0%
Total 7541-00 · AIP 41 SA Ph. III -Runway/Term.	0.00	0.00	0.00	0.0%
7542-00 · AIP '42 EXPENSE - AC Apron Dsgn				
7542-01 · AIP '42 - Eligible	0.00	0.00	0.00	0.0%
7542-02 · AIP '42 Non-Eligible	0.00	0.00	0.00	0.0%
7542-03 · AIP 42 - Land Aquisition	0.00	0.00	0.00	0.0%
Total 7542-00 · AIP '42 EXPENSE - AC Apron Dsgn	0.00	0.00	0.00	0.0%
7543-00 · AIP '43 EXPENSE - Air Carr. Apr				
7543-01 · AIP '43 - AC Apron - Eligible	367,533.13	1,135,182.74	-767,649.61	32.4%
7543-02 · AIP '43 - Parking - Non-Eligibl	40,131.77	0.00	40,131.77	100.0%
7543-03 · AIP '43 - SRE Equipment	0.00	0.00	0.00	0.0%
7543-04 · AIP '43 - RPZ Acq/Tree Removal	18,480.60	250,000.00	-231,519.40	7.4%
7543-05 · AIP '43 - Retainer - Eligible	56,430.25	0.00	56,430.25	100.0%
7543-06 · AIP '43 - Non-Elig. Retainer	15,525.80	0.00	15,525.80	100.0%
Total 7543-00 · AIP '43 EXPENSE - Air Carr. Apr	498,101.55	1,385,182.74	-887,081.19	36.0%
7544-00 · AIP '44 EXPENSE RPZ EA				
7544-01 · AIP '44 - Eligible	4,293.40	0.00	4,293.40	100.0%
7544-02 · AIP '44 - Non-Eligible	0.00	0.00	0.00	0.0%
7544-00 · AIP '44 EXPENSE RPZ EA - Other	0.00	0.00	0.00	0.0%
Total 7544-00 · AIP '44 EXPENSE RPZ EA	4,293.40	0.00	4,293.40	100.0%
7545-00 · AIP '45 EXPENSE - Exp. AC Apron				
7545-01 · AIP '45 - Eligible	536,685.98	0.00	536,685.98	100.0%
7545-02 · AIP '45 - Non-Eligible	0.00	0.00	0.00	0.0%
7545-03 · AIP '45 - Retainer - Eligible	-18,595.74	0.00	-18,595.74	100.0%
7545-04 · AIP '45 - Non-Elig. Retainer	258.75	0.00	258.75	100.0%
Total 7545-00 · AIP '45 EXPENSE - Exp. AC Apron	518,348.99	0.00	518,348.99	100.0%

Friedman Memorial Airport

Profit & Loss Budget vs. Actual (COMBINED '19)

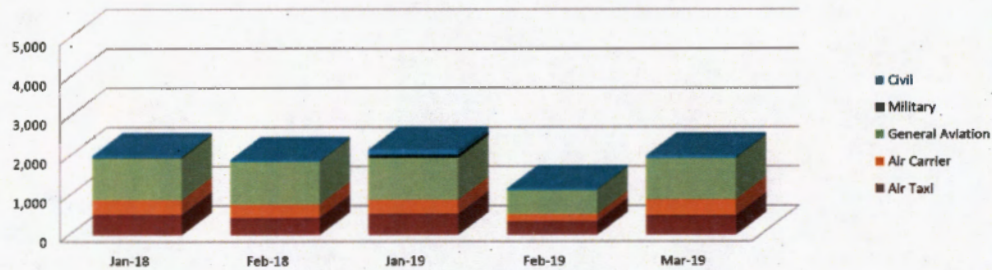
	Oct '18 - Feb 19	Budget	\$ Over Budget	% of Budget
7546-00 · AIP '46 EXPENSE - SRE/ARFF EQU				
7546-01 · AIP '46 - Eligible	409,254.07	0.00	409,254.07	100.0%
7546-00 · AIP '46 EXPENSE - SRE/ARFF EQU - Other	0.00	0.00	0.00	0.0%
Total 7546-00 · AIP '46 EXPENSE - SRE/ARFF EQU	409,254.07	0.00	409,254.07	100.0%
9001-00 · PFC 14-09-C-00-SUN				
9001-01 · PFC '14 RSA Formulation	0.00	0.00	0.00	0.0%
9001-02 · PFC '14 Acquire SRE	0.00	0.00	0.00	0.0%
9001-03 · PFC '14 Master Plan	0.00	0.00	0.00	0.0%
9001-04 · PFC '14 Relocate SW Taxilane By	0.00	0.00	0.00	0.0%
9001-05 · PFC '14 Relocate GA Apron	0.00	0.00	0.00	0.0%
9001-06 · PFC '14 Perimeter Fence Relocat	0.00	0.00	0.00	0.0%
9001-07 · PFC '14 RSA Grading	0.00	0.00	0.00	0.0%
9001-08 · PFC '14 Relocate Taxiway A & B	0.00	0.00	0.00	0.0%
9001-09 · PFC '14 Relocate Power to PAPI	0.00	0.00	0.00	0.0%
9001-10 · PFC '14 Relocate AWOS	0.00	0.00	0.00	0.0%
9001-11 · PFC '14 Relocate SRE/ARFF Bldg.	0.00	0.00	0.00	0.0%
9001-12 · PFC '14 Relocate Terminal Apron	0.00	0.00	0.00	0.0%
9001-13 · PFC '14 Relocate Cargo Apron	0.00	0.00	0.00	0.0%
9001-14 · PFC '14 Relocate Hangars	0.00	0.00	0.00	0.0%
9001-15 · PFC '14 Rehab Terminal Bldg.	0.00	0.00	0.00	0.0%
9001-16 · PFC '14 Relocate N. Taxilane	0.00	0.00	0.00	0.0%
9001-17 · PFC '14 Relocate Central Bypass	0.00	0.00	0.00	0.0%
9001-18 · PFC '14 Runway Rehabilitation	0.00	0.00	0.00	0.0%
9001-19 · PFC '14 Administration	0.00	0.00	0.00	0.0%
9001-20 · PFC '14 RETAINER	0.00	0.00	0.00	0.0%
Total 9001-00 · PFC 14-09-C-00-SUN	0.00	0.00	0.00	0.0%
Total "C" EXPENSES	1,451,580.73	1,415,213.74	36,366.99	102.6%
Total EXPENDITURES	3,081,663.79	3,280,555.04	-198,891.25	93.9%
Total Expense	3,081,663.79	3,280,555.04	-198,891.25	93.9%
Net Income	-505,491.77	-1,084,754.53	579,262.76	46.6%

**Friedman Memorial Airport
March 2019**

ATCT Traffic Operations Record

Month	2001	2002	2003	2004	2005	2006	2007	2008	2009	2010	2011	2012	2013	2014	2015	2016	2017	2018	2019
January	3,622	3,893	3,912	2,600	3,028	2,787	4,547	2,520	2,070	2,379	2,408	2,098	2,454	2,128	2,249	1,842	1,665	2,019	2,172
February	4,027	4,498	3,073	3,122	3,789	3,597	3,548	2,857	2,244	2,647	2,117	2,205	2,612	1,417	2,268	2,533	1,629	1,914	1,187
March	4,952	5,126	3,086	4,097	3,618	2,918	4,677	3,097	2,145	2,709	1,813	1,921	2,753	1,924	2,023	1,917	1,895	1,860	2,016
April	2,494	3,649	2,213	2,840	2,462	2,047	2,581	2,113	1,724	1,735	1,604	1,513	1,509	1,210	1,337	1,380	1,426	1,257	0
May	3,905	4,184	2,654	3,282	2,729	2,134	1,579	2,293	2,280	1,891	1,533	1,693	1,852	555	668	1,501	1,802	1,442	0
June	4,787	5,039	4,737	4,438	3,674	3,656	5,181	3,334	2,503	3,019	2,898	2,761	3,203	2,164	2,387	2,475	2,502	2,552	0
July	6,359	8,796	6,117	5,910	5,424	5,931	7,398	4,704	4,551	5,005	5,004	4,810	5,345	4,345	4,159	4,562	4,573	5,033	0
August	6,479	6,917	5,513	5,707	5,722	6,087	8,196	4,570	4,488	4,705	4,326	3,823	4,644	3,114	2,932	3,719	3,873	3,175	0
September	3,871	4,636	4,162	4,124	4,609	3,760	4,311	2,696	3,376	3,128	3,359	2,396	2,403	2,237	2,292	2,379	2,036	2,224	0
October	3,879	3,656	3,426	2,936	3,570	3,339	3,103	2,134	2,145	2,012	1,886	1,658	1,874	1,760	1,789	1,377	1,939	1,670	0
November	3,082	2,698	2,599	2,749	2,260	2,912	2,892	1,670	1,901	1,309	1,114	1,325	1,475	908	1,229	1,314	1,135	1,392	0
December	3,401	2,805	3,247	3,227	2,722	3,834	2,699	1,848	2,272	1,811	2,493	2,066	2,016	1,545	1,482	1,717	2,217	2,033	0
Totals	50,858	55,897	44,739	45,032	43,607	43,002	50,712	33,836	31,699	32,350	30,555	28,269	32,140	23,307	24,815	26,716	26,692	26,571	5,375

**Operations
2018-2019
(Cumulative)**



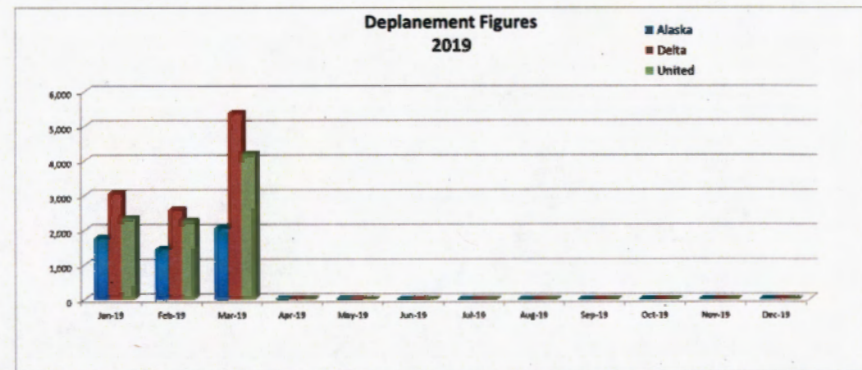
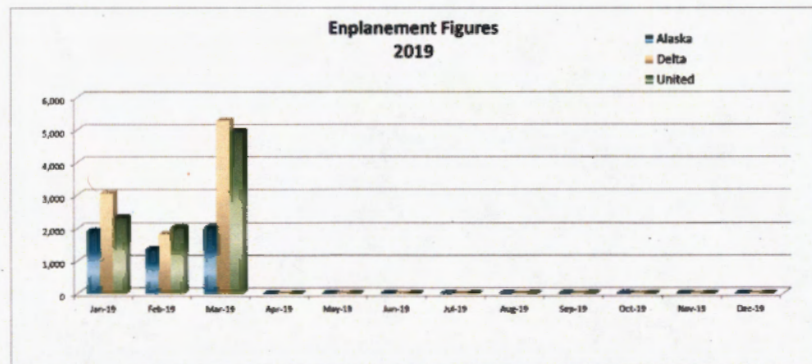
**ATCT Operations Change
(2019 vs. 2018)**

	2019	2018	% Change
Air Taxi	507	451	12%
Air Carrier	399	363	10%
General Aviation	1,044	1,005	4%
Military	2	3	-33%
Civil	64	38	68%
Total	2,016	1,860	8.39%
YTD Total	5,375	3,933	36.66%

**Friedman Memorial Airport
March 2019**

2019 Enplanements																		
Date	Alaska Airlines					Delta Airlines					United Airlines					Total Enp.	Prior Year Total Enp.	Total % Change
	Revenue	Non-Revenue	Total	Prior Year Month	Total % Change	Revenue	Non-Revenue	Total	Prior Year Month	Total % Change	Revenue	Non-Revenue	Total	Prior Year Month	Total % Change			
Jan-19	1,868	54	1,922	4,051	-53%	3,876	98	3,974	3,281	21%	3,171	54	3,225	2,430	33%	9,121	9,762	-6.6%
Feb-19	1,328	26	1,354	3,949	-66%	1,764	62	1,826	2,602	-30%	2,003	22	2,025	2,129	-5%	5,205	8,680	-40.0%
Mar-19	1,972	46	2,018	4,379	-54%	5,112	171	5,283	3,193	65%	4,877	74	4,951	2,623	89%	12,252	10,195	20.2%
Totals	5,168	126	5,294	12,379	-57%	10,752	331	11,083	9,076	22%	10,051	150	10,201	7,182	42%	26,578	28,637	-7.2%
Legend for Chart:																		

2019 Deplanements																		
Date	Alaska Airlines					Delta Airlines					United Airlines					Total Dep.	Prior Year Total Dep.	Total % Change
	Revenue	Non-Revenue	Total	Prior Year Month	Total % Change	Revenue	Non-Revenue	Total	Prior Year Month	Total % Change	Revenue	Non-Revenue	Total	Prior Year Month	Total % Change			
Jan-19	1,724	50	1,774	3,377	-47%	2,944	100	3,044	2,372	28%	2,286	45	2,331	1,583	47%	7,149	7,332	-2.5%
Feb-19	1,418	29	1,447	4,188	-65%	2,526	56	2,582	2,708	-5%	2,227	41	2,268	2,332	-3%	6,297	9,228	-31.8%
Mar-19	2,002	64	2,066	4,033	-49%	4,956	419	5,375	2,822	90%	4,114	78	4,192	2,267	85%	11,633	9,122	27.5%
Totals	5,144	143	5,287	11,598	-54%	10,426	575	11,001	7,902	39%	8,627	164	8,791	6,182	42%	25,079	25,682	-2.3%
Legend for Chart:																		



**Friedman Memorial Airport
March 2019**

2019 Seat Occupancy																		
Date	Alaska Airlines				Delta Airlines				United Airlines				Seat Occupancy Totals			Seat Occupancy Totals Prior Year Comparison		
	Departure Flights	Seats Available	Seats Occupied	Percent Occupied	Departure Flights	Seats Available	Seats Occupied	Percent Occupied	Departure Flights	Seats Available	Seats Occupied	Percent Occupied	Total Seats Available	Total Seats Occupied	Total Percent Occupied	Prior Year % Change Total Seats Available	Prior Year % Change Total Seats Occupied	Prior Year % Change Total % Occupied
Jan-19	31	2,356	1,922	82%	78	5,928	3,974	67%	69	5,244	3,225	61%	13,528	9,121	67%	10%	-7%	-12%
Feb-19	21	1,596	1,354	85%	47	3,572	1,826	51%	44	3,344	2,025	61%	8,512	5,205	61%	-18%	-31%	-12%
Mar-19	31	2,356	2,018	86%	98	7,448	5,283	71%	92	6,992	4,951	71%	16,796	12,252	73%	16%	12%	-2%
Totals	83	6,308	5,294	84%	223	16,948	11,083	65%	205	15,580	10,201	65%	38,836	26,578	68%	-53%	-50%	-15%

