



# Friedman Memorial Airport Authority

## Regular Board Meeting

June 1, 2021





Friedman Memorial  
Airport

## Environmental Assessment

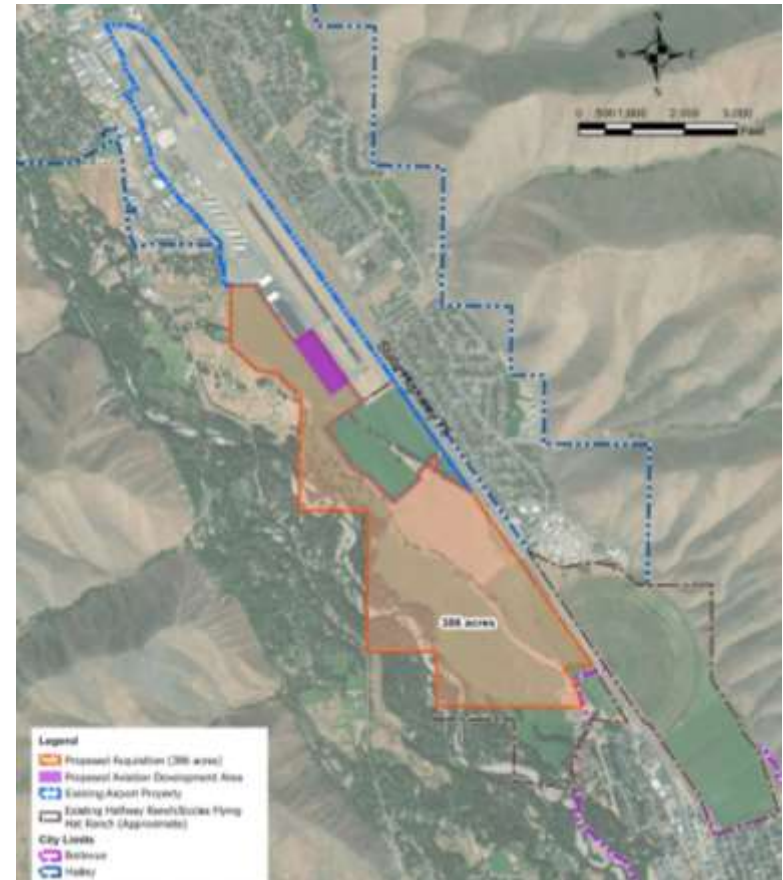
Proposed Property  
Acquisition for  
Approach Protection  
and Land Use  
Compatibility

Project Update

June 1, 2021

# Proposed Action & Project Need

- Acquisition of 386 Acres
  - Approach Protection
  - Land Use Compatibility
  
- Development of 10 Acres for General Aviation
  - Replacing aviation facilities (apron and hangars) lost as a result of the Runway Safety Area (RSA) project
  - Provide additional aircraft hangars



# Environmental Assessment Process

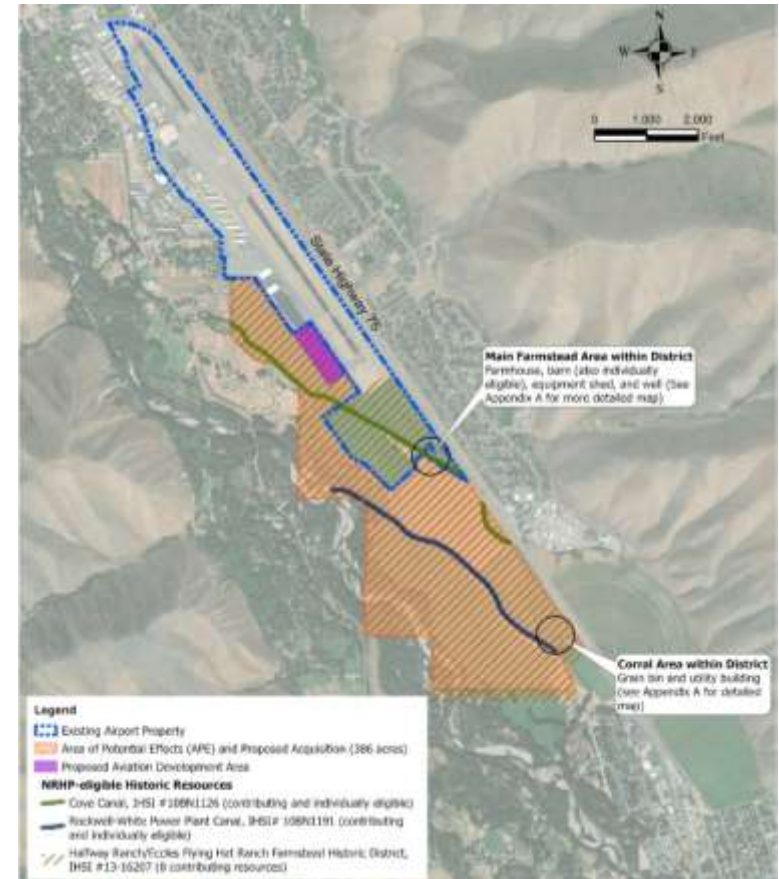
- A. Identification of Proposed Project
- B. Environmental Analysis and Agency Coordination
- C. Draft Environmental Assessment (EA)
- D. Public Review and Comment
- E. Final EA
- F. FAA Finding of No Significant Impact (FONSI)

# Assessment Categories

1. Air Quality
2. Biological Resources
3. Climate
4. Coastal Resources
5. Department of Transportation Act, Section 4(f)
6. Farmlands
7. Hazardous Materials, Solid Waste, and Pollution Prevention
8. Historical, Architectural, Archeological, and Cultural Resources
9. Land Use
10. Natural Resources and Energy Supply
11. Noise and Noise-Compatible Land Use
12. Socioeconomics, Environmental Justice, and Children's Environmental Health and Safety Risks
13. Visual Effects
14. Water Resources
15. Cumulative Impacts
16. Irreversible and Irretrievable Commitment of Resources

# Historical, Architectural, Archeological, and Cultural Resources

- Potential to effect Halfway Ranch/ Eccles Flying Heart Ranch Historic District
- Section 106 of the Historic Preservation Act
  - Requires federal agencies to consider the effects of their undertaking (or action) on properties listed in or eligible for listing in the National Register of Historic Places
  - Requires consultation with the Idaho State Historic Preservation Officer (SHPO)



# Historical, Architectural, Archeological, and Cultural Resources



Photo 1. Overview of the core of the determined-eligible Halfway Ranch/Eccles Flying Hat Ranch Historic District as seen from State Highway 75.



Photo 2. Detail of east elevation on the contributing farmhouse, view facing northwest.

# Historical, Architectural, Archeological, and Cultural Resources



Photo 3. Detail of south and east elevation on the contributing farmhouse, view facing northeast.



Photo 4. Detail of north and west elevations on the contributing farmhouse, view facing southeast.



# Historical, Architectural, Archeological, and Cultural Resources



Photo 5. View of the contributing well, view facing northwest.



Photo 6. Individually eligible barn and contributing barn, view facing west.

# Historical, Architectural, Archeological, and Cultural Resources



Photo 7. Contributing equipment shed, view facing northeast.



Photo 8. Contributing utility building and grain bin (roof visible in background), view facing northeast.

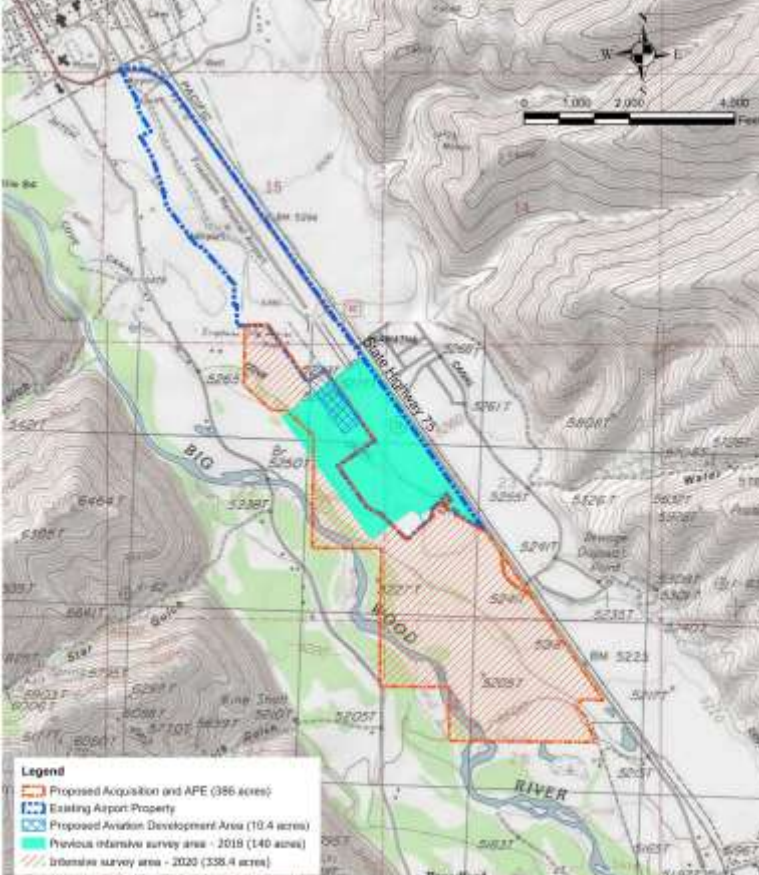
# Historical, Architectural, Archeological, and Cultural Resources



Photograph 2. POD for Rockwell-White Power Plant Canal, view northwest (Digital Image # 058)



Photograph 3. Rockwell-White Power Plant Canal, view south (Digital Image # 060)



# Other Resources

- Biological Site Review
- Wetlands Survey
- Hazardous Materials Assessment



# Schedule

- FAA reviewing draft Determination of Effect for Historic Resources
- Preliminary Draft EA Chapters Sent to FAA
- Public review of Draft EA after FAA approval
- FAA decision expected summer



Questions

Clarifications

Answers

Discussion

Thank You.